

Thank You

For Choosing VantecUSA Product.

We are committed to providing you with the best service and support. If you have a problem with installing, getting the product to function or other product related question, please feel free to write to us. We will help you answer your question.

You can write to us at :

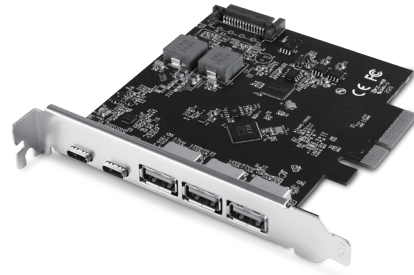
support@vantecusa.com

For the latest Drivers, Manual and Frequently Asked Questions (FAQ), they are available at our website at vantecusa.com or write to us.

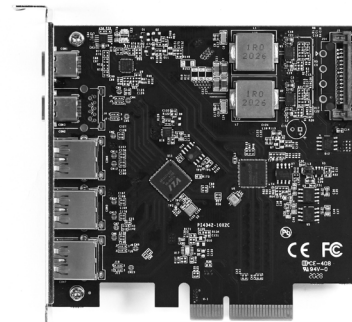
Thank you,
VantecUSA Support Team.



Installation Guide

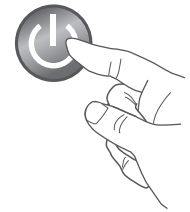


1. Verify the package contents.

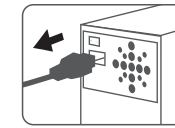


2. Before you unpack and take out your PCIe Card, please be aware that these are sensitive devices and can be damaged by Static Electricity. Please ground yourself before handling them and hold it by the edge of the PCIe card.

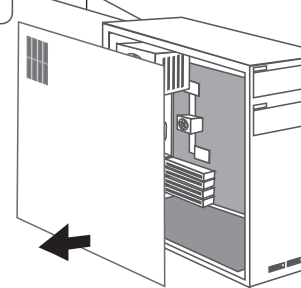
1. Turn OFF Computer System



2. Unplug power Cord



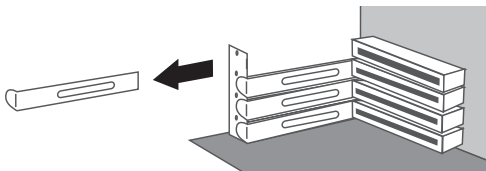
3. Wait 1-2 Minutes



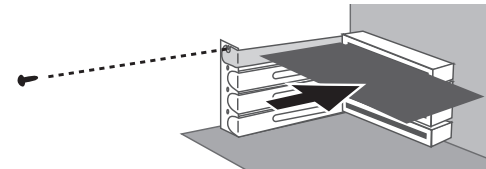
4. Remove Cover

3. Turn off the Computer System, MUST unplug the computer power cord from the wall outlet, wait 1-2 minutes, and remove the cover of the Computer System.

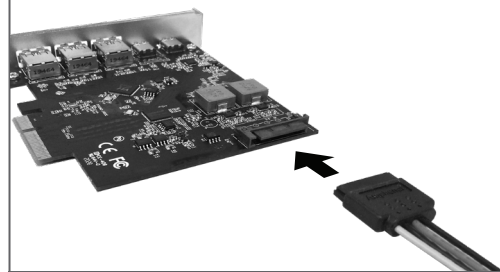
1. Remove bracket



2. Insert card and secure

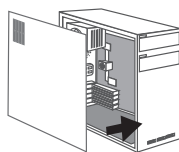


4. Locate a free PCIe X4, x8, or x16 expansion slot and remove the plate covering the back aligned with the PCIe slot. Insert this new PCIe card into the PCIe slot, make sure the PCIe card contacts are fully inserted into the PCIe slot. Secure and fasten the PCIe card as documented in the Computer System manufacturer's documentation.



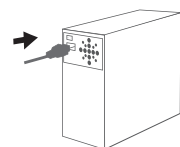
5. There is a SATA power connector on this PCIe card. Please find an available SATA power cable from your System power supply and connect to this card SATA port.

1. Replace Cover



3. Turn ON power

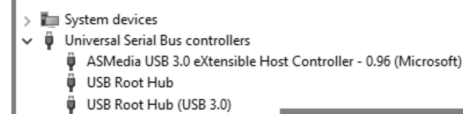
2. Plug back power



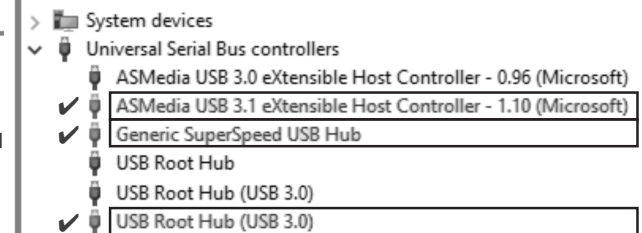
6. Place the case cover back on the Computer System. Reattached the power cord to the Computer System, plug back to the wall outlet, and power ON the System.

7. If you are running Windows 10 or 8, the drivers are already built into the OS and the Computer System will automatically search and install the drivers for you. You do not need to download or install any drivers yourself. If your Windows 10 or 8 is not up to date, please use the Windows update to update your Computer System with the latest updates. These updates will protect and get the latest drivers for any peripherals you are adding to your Computer System.

Before Install



After Install



8. Upon completion, you should see this card listed in the Device Manager as "Asmedia USB 3.1 eXtensible Host Controller - x.xx (Microsoft)" shown. The Installed PCIe card is ready for use.

Information in this document is subject to change without notice.

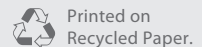
Reproduction of these materials in any manner whatsoever without written permission is strictly forbidden.



www.vantecusa.com

Copyright © 2021 Vantec Thermal Technologies. All Rights Reserved. All Registered Trademarks Belong to Their Respective Companies.

v1.01



UGT-PC3A2C