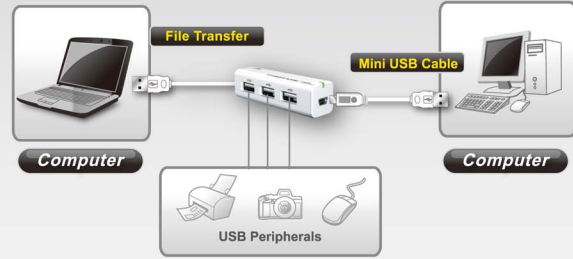
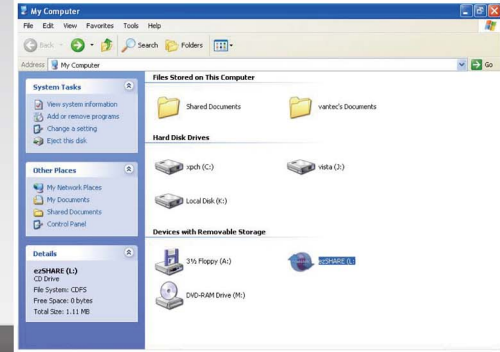


Getting Started: Windows 2000/XP/Vista

ezSHARE™ PRO Adapter



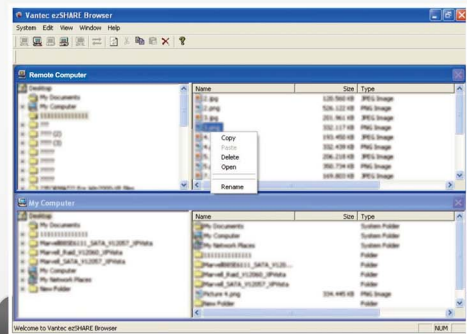
1 Plug the USB to your Host computer and the other USB to your Remote Computer.



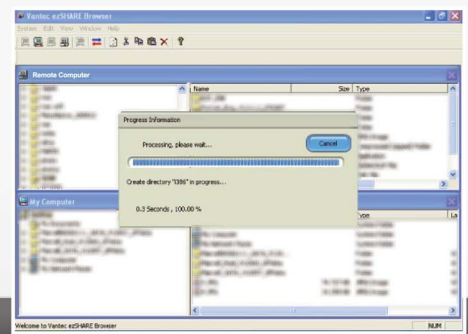
2a Select "My Computer" and double click "ezSHARE". (If the PC is on auto run, please ignore this and proceed to step 2b)



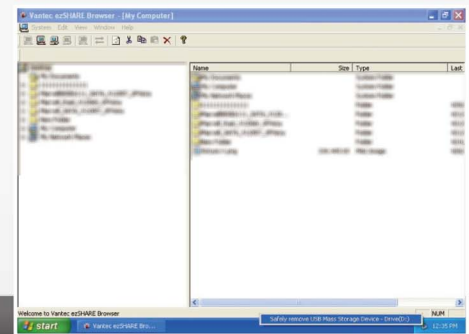
or 2b A pop-up message will appear. Click on ezSHARE to start the program.



3 You will enter the [ezSHARE Browser]; it will be separated into two parts which are labeled as [Remote Computer] and [My Computer].



4 You may begin to drag files or data from either side and begin to share/transfer files.



5 Once finished, exit and safely disconnect the USB from the Host and Remote computers.

LED Indicator:

LED Color	Status	Description
Green	Light	USB port is connected
	Flashing	Data is being transferred
When use Hub only the indicated light won't flash.		

TRADEMARKS

MS-DOS, Microsoft, Windows NT/2000/ME/XP/Vista are trademarks of Microsoft Corporation.
Apple, Macintosh and Mac are trademarks of Apple Computer
*All other third-party brands and names are the property of their respective owners.

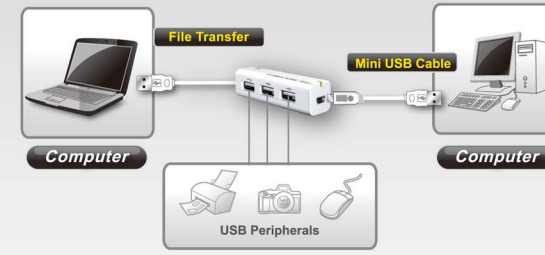
NOTE :

Files can be accessed, copied, shared, transferred, deleted, etc. on both computers at the same time*



Getting Started: Mac

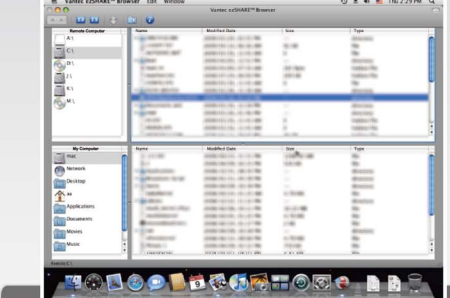
ezSHARE™ PRO Adapter



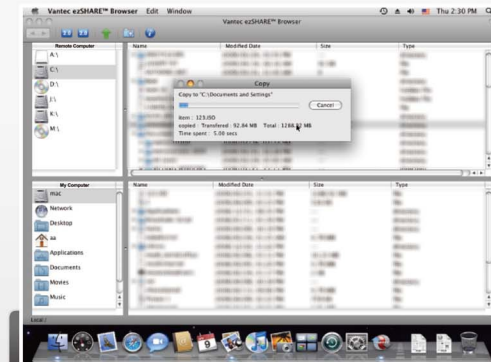
1 Plug the USB to your Host computer and the other USB to your Remote Computer.



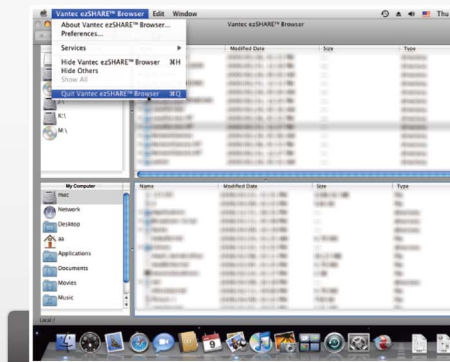
2 Double-click [ezSHARE_Mac.app] on the desktop and execute [ezSHARE_Mac.app]. A pop-up message will appear to continue the execution of the software.



3 You will enter the [ezSHARE Browser]; it will be separated into two parts which are labeled as [Remote Computer] and [My Computer].



4 You may begin to drag files or data from either side and begin to share/transfer files.



5 Once finished, exit and safely disconnect the USB from the Host and Remote computers.



LED Indicator :

LED Color	Status	Description
Green	Light	USB port is connected
	Flashing	Data is being transferred
When use Hub only the indicated light won't flash.		

NOTE :

Files can be accessed, copied, shared, transferred, deleted, etc. on both computers at the same time*

