



eSATA

2-Port eSATA ExpressCard

USER MANUAL

Table of Contents:

1. Introduction	pg. 2
2. Package Contents	pg. 2
3. Features / Specifications	pg. 3
4. System Requirements	pg. 3
5. Installation	
5.1. Hardware Installation	pg. 4
5.2. Software Installation	
Windows 2000/XP/Vista	pg. 4
Windows NT 4.0	pg. 4
Mac OS X	pg. 6
5.3. Verifying The Installation	pg. 11
5.4. Driver Update	pg. 12
6. Warranty	pg. 13
7. Contact	pg. 13

1. Introduction

Serial ATA (SATA) is the latest form of computer connectivity, featuring faster transfer speeds, easier configuration, and the ability to hot-swap drives. With the Vantec 2-Port eSATA ExpressCard, you can add the features and functionality of eSATA to your notebook. Traditionally, one would use USB 2.0 to connect to external hard drives. While USB 2.0 offers reasonably fast speeds at 480Mbps, SATA transfers at a speed of up to 3.0 Gbps! Take advantage of SATA on your notebook with the Vantec 2-Port eSATA ExpressCard.

2. Package Contents

- 2-Port eSATA ExpressCard (UGT-ST450CB)
- Driver CD
- User's Manual

3. Features / Specifications

Features

- Easily Add Two eSATA Ports to your ExpressCard Equipped Notebook
- Transfer Rate up to 3.0 Gbps
- Easy Plug & Play Installation

Specifications

- eSATA (External SATA) Connector
- ExpressCard 34mm Form Factor
- Supports Hot-Swap
- Compliant with Serial ATA 1.0 Specifications
- Compliant with PCI Express Specification, Revision 1.0a
- RoHS Compliant
- Supports Windows NT, 2000, XP, Server 2003, and Vista(32/64-bit)
- Supports Mac OS X v10.4

4. System Requirements

- Pentium or Equivalent Notebook with Available ExpressCard Slot
- Windows NT/2000/XP/Server 2003/Vista(32/64-bit) or Mac OS X v10.4

5. Installation

5.1. Hardware Installation

1. Insert eSATA ExpressCard into an available slot. Connect serial ATA cable(s) between the SATA port and the serial ATA device(s).

5.2. Software Installation

Windows 2000/XP/Vista or Windows Server 2003 Installation

1. Windows will display the 'Found New Hardware Wizard'. 'Mass Storage controller'.
2. Select "Install from a list or specific location (Advanced)", and click "Next", and make sure the Driver CD is in your CD-ROM/DVD.
3. Select "Search for the best driver in these locations", and check "Include this location in the search:" uncheck the other boxes.
4. Type in E:\ (If your CD-ROM/DVD is E:\) then click "Browse".
5. Points specify a location, example E:\UGT-ST450CB\Driver\ WinXP_2000_2003_NT, and click "OPEN" then "OK"
6. When the wizard indicates that it found a driver for the device click 'Next'
7. If the 'Hardware Installation' dialog appears, click 'Continue Anyway'
8. The wizard will now copy the required files to the system and start the Driver. After starting the driver the wizard will display a completion dialog, click 'Finish' to exit the wizard.

5.2. Software Installation

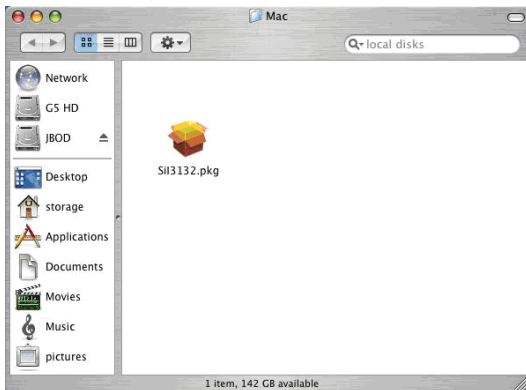
Windows NT Installation

1. Windows will display the 'Found New Hardware Wizard'. Click 'Next'.
2. Select Search for a suitable driver for my device (recommended) and click Next.
3. Insert the Driver CD in your CD-ROM/DVD drive, check Specify a location, uncheck the other boxes, click Next, type in E:\ (If your CD-ROM/DVD is E:\). Click Browse.
4. Points specify a location, example E:\UGT-ST450CB\Driver\WinXP_2000_2003_NT, and click "OPEN" then "OK"
5. Choose 'Silicon Image Sil 3132 SATALink Controller' and click 'OK'.
6. After the driver installation has completed you can follow the instructions in section 5.3 to verify controller was installed correctly.

5.2. Software Installation

Mac OS X

1. Insert the Driver CD into your CD-Rom/DVD.
2. Open the Mac folder and click the “Sil3132.pkg” installer.



3. Click “Continue”



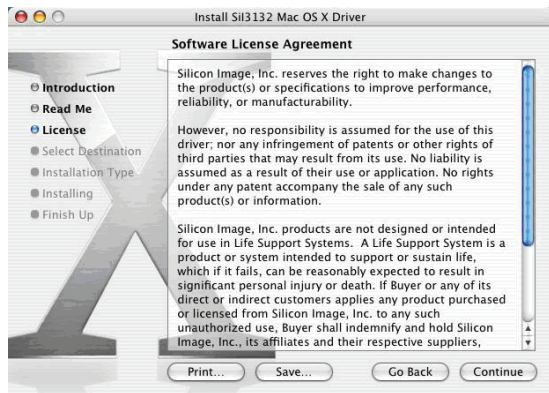
5.2. Software Installation

Mac OS X

4. Review the provided Read Me. Click “Continue”.



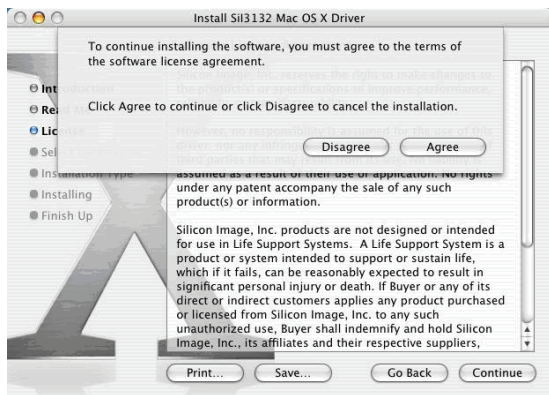
5. Review the License agreement. Click “Continue”.



5.2. Software Installation

Mac OS X

6. Click "Agree" to accept the terms of the License agreement and proceed with the installation.



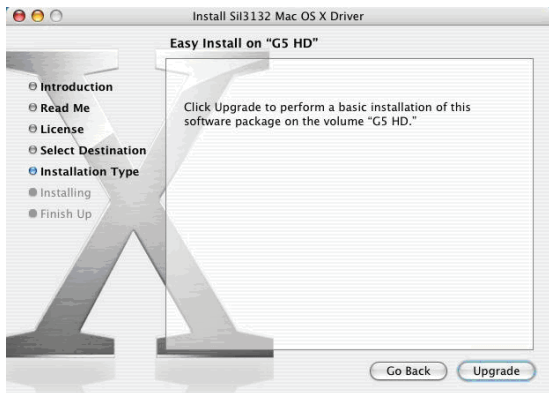
7. Select the system hard disk drive.



5.2. Driver Installation

Mac OS X

8. Click "Upgrade" to install the driver.



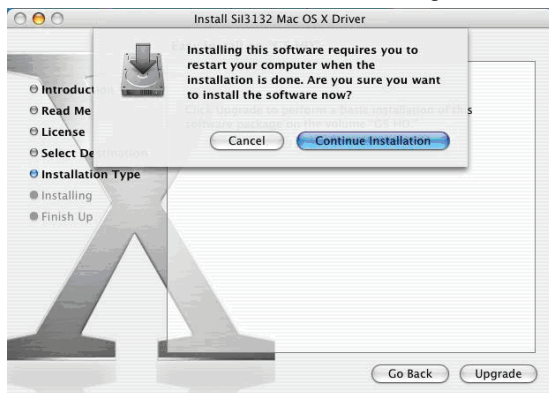
9. Enter the username and password for the root account. Click "OK".



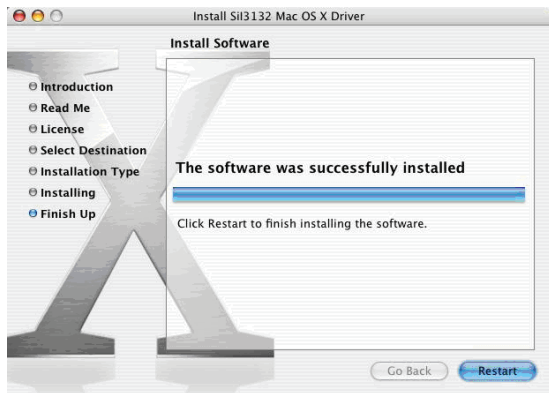
5.2. Driver Installation

Mac OS X

10. Click “Continue Installation” to acknowledge the restart warning.



11. Click “Restart” to reboot the computer and complete the installation.



To confirm the driver installation

In case of a driver installation failure, an error message will appear after you reboot the computer. Follow the recommendations in the error message.

5.3. Verifying The Installation

Windows 2000/XP/Vista

1. Right click on 'My Computer' icon, select 'Properties', left click on 'Hardware' tab, and then on 'Device Manager' button.
2. Double click on 'SCSI and RAID Controllers', If there is no yellow '!' or '?' in front of 'Silicon Image Sil 3132 SATALink Controller', the driver is started correctly.
3. To view information about the devices attached to the controller, use the SilCfg Utility and click on the device from the list.

Windows NT 4.0

1. Double click on 'My Computer' icon, select 'Control Panel', click on 'SCSI Adapters' icon, 'Silicon Image Sil 3132 SATALink Controller' should displayed correctly under 'Device' and 'Driver' tab.
2. To view information about the devices attached to the controller, use the SilCfg Utility and click on the device from the list.

5.4. Driver Update

Windows 200/XP/Vista

1. Right click on 'My Computer' and select 'Properties'. Under the 'System Properties' section, click on 'Hardware' tab, and then on 'Device Manager' click 'SCSI and RAID Controllers' and right click 'Silicon Image Sil 3132 SATALink Controller' then select 'Properties' from the context menu.
2. Click 'Driver' , 'Update Driver' and select 'Search for a suitable driver for my device [Recommended]'. Insert the Driver CD in your CD-ROM/DVD drive. Click 'Next' and complete the driver installation.
3. System will go through the enumeration process and install the driver. At the end of the process, click 'Yes' to reboot your system when necessary.

Windows NT 4.0

1. Click 'Start'
2. Under 'Settings', click 'Control Panel'.
3. Select 'SCSI Adapters' from the Control Panel.
4. Select the 'Drivers' tab and click 'Add'.
5. . Click 'Have Disk'.
6. . Insert the Driver CD in your CD-ROM/DVD drive and press 'Enter'.
7. Choose ' E:\UGT-ST450CB\Driver\WinXP_2000_2003_NT ' and click 'OK'.

6. Warranty

The *Vantec 2-Port eSATA ExpressCard* comes with a 1 year limited warranty. If your unit should become defective within that time frame, please go to <http://www.vantecusa.com> for information on how to receive warranty exchange or repair. Cosmetic defects and missing parts are not covered under this warranty. Please check the contents of the unit to make sure you received all parts. Also, check for any cosmetic flaws. If any parts are missing or if there are cosmetic defects, please contact the retailer from which you purchased the unit immediately and ask for a replacement.

7. Contact

Vantec Thermal Technologies

43951 BoscCell Road

Fremont, CA 94538

Tel: 510.668.0368

Fax: 510.668.0367

Website: www.vantecusa.com

TRADEMARKS

MS-DOS, Microsoft, Windows NT/2000/XP/Vista are trademarks of Microsoft Corporation. Apple, Macintosh and Mac are trademarks of Apple Computer

Copyright © 2007 Vantec Thermal Technologies. All Rights Reserved.
All registered trademarks belong to their respective companies.