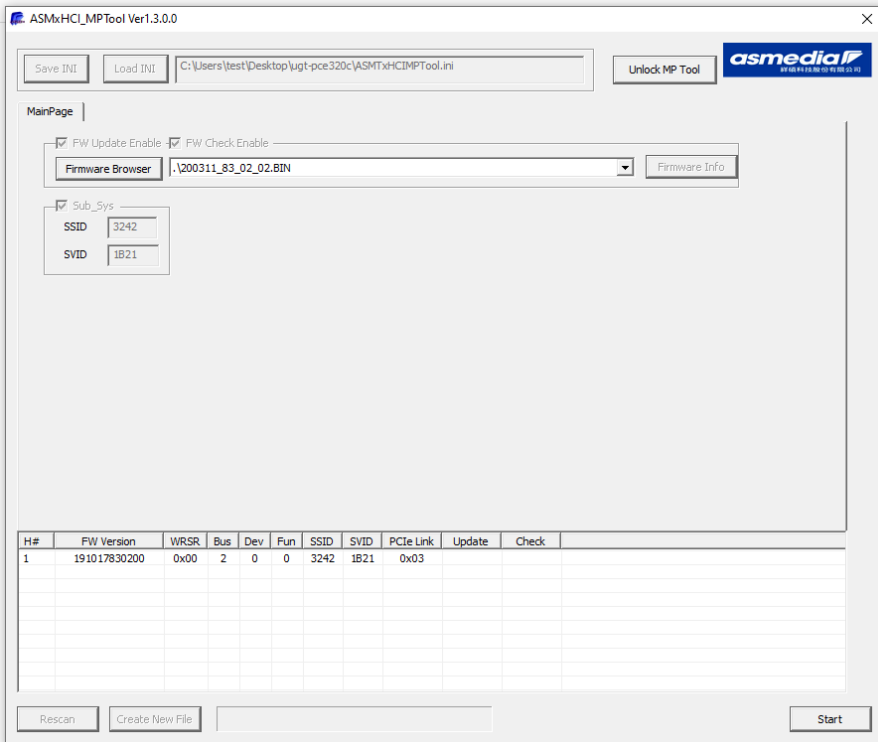
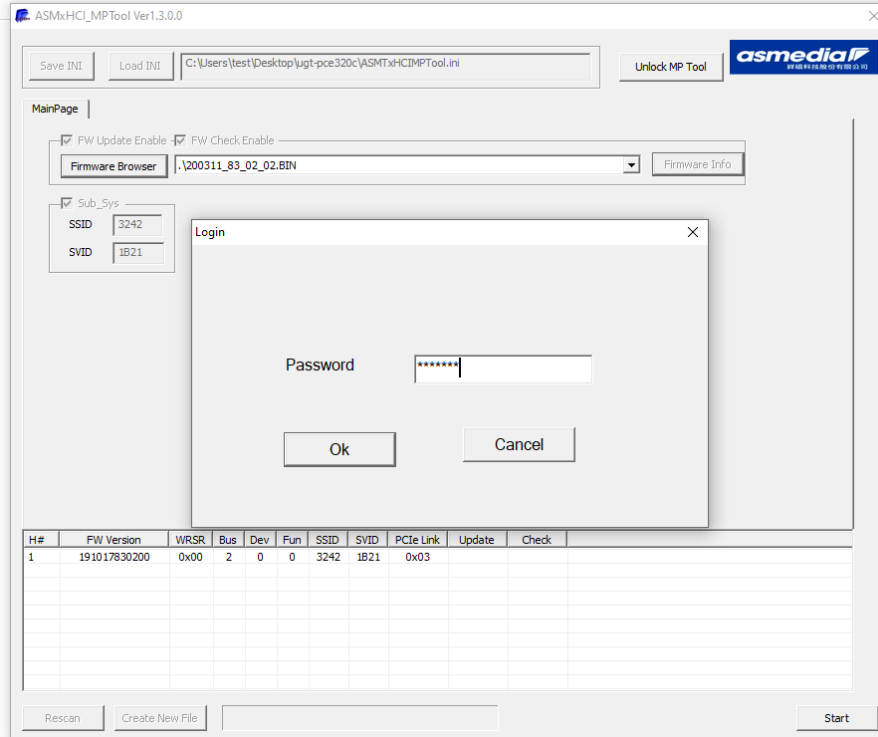


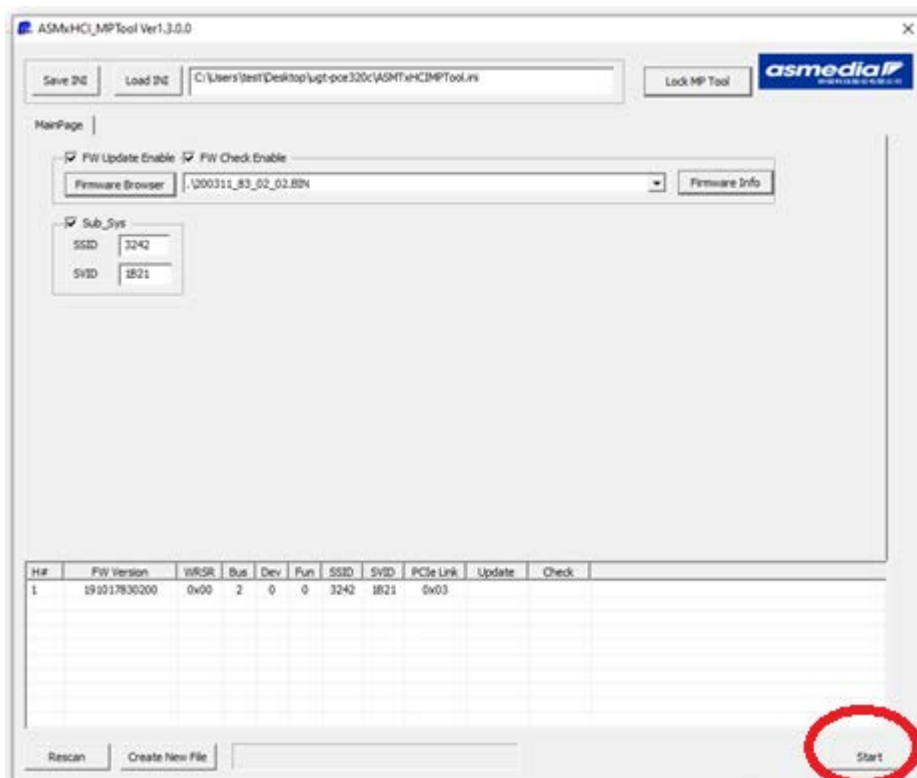
1. Right click the ASMTxHCI\_MPTool.exe, run in **Administrator Mode**.



2. Click the “Unlock MP Tool” and key-in the password “asmedia”.



3. click the “start” button to update the FW.



4. After the update FW processes show “PASS PASS”, power off the PC. After few seconds, power on the PC. Using the ASMTxHCI\_MPTool.exe to check FW version.

