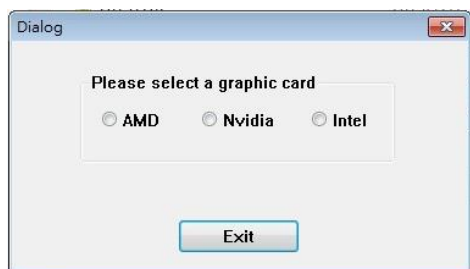
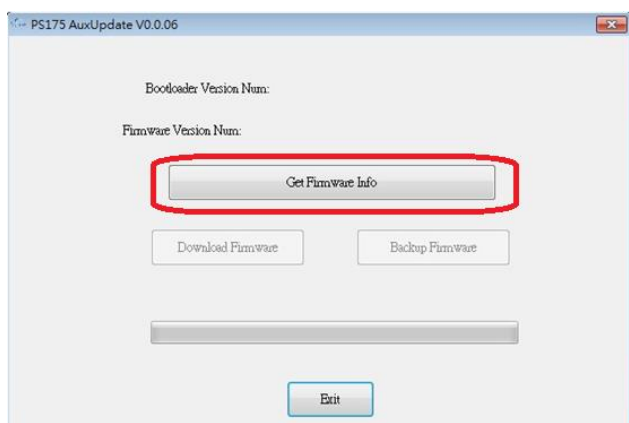


Step1: Need to connector the dongle to the GPU and monitor

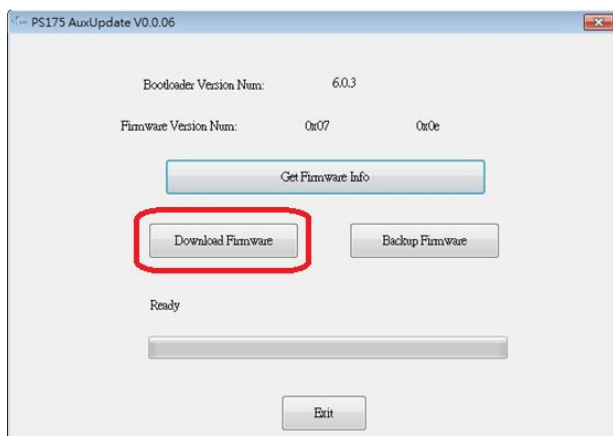
Step2: Open the “AuxUpdate” tool and select your GPU brand



Step3: Click “Get Firmware Info” to get the current FW version.

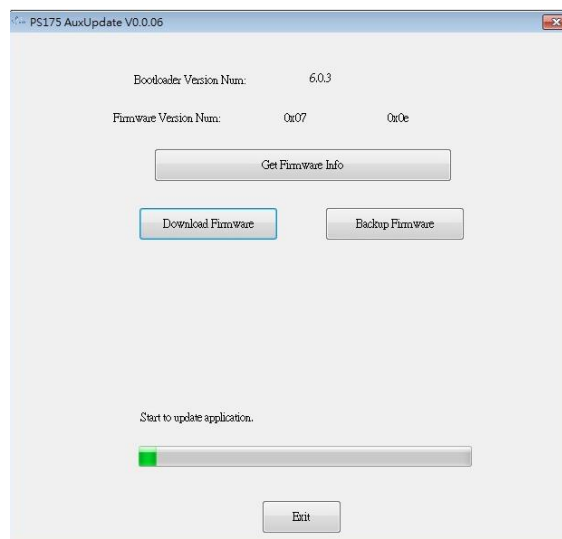


Step4: Click “Download Firmware” and select the new FW.



Step5: Browse to where “ps176b0_0x07.0x00.0x26_encrypt_bank12.hex” file is located and select open to select the firmware file.

Step6: Start the update; it will take a few minutes. You should see the update in progress.



Step7: After completing. Re-plug the dongle and click “Get Firmware Info” again and it will be show 0x07 0x26.

