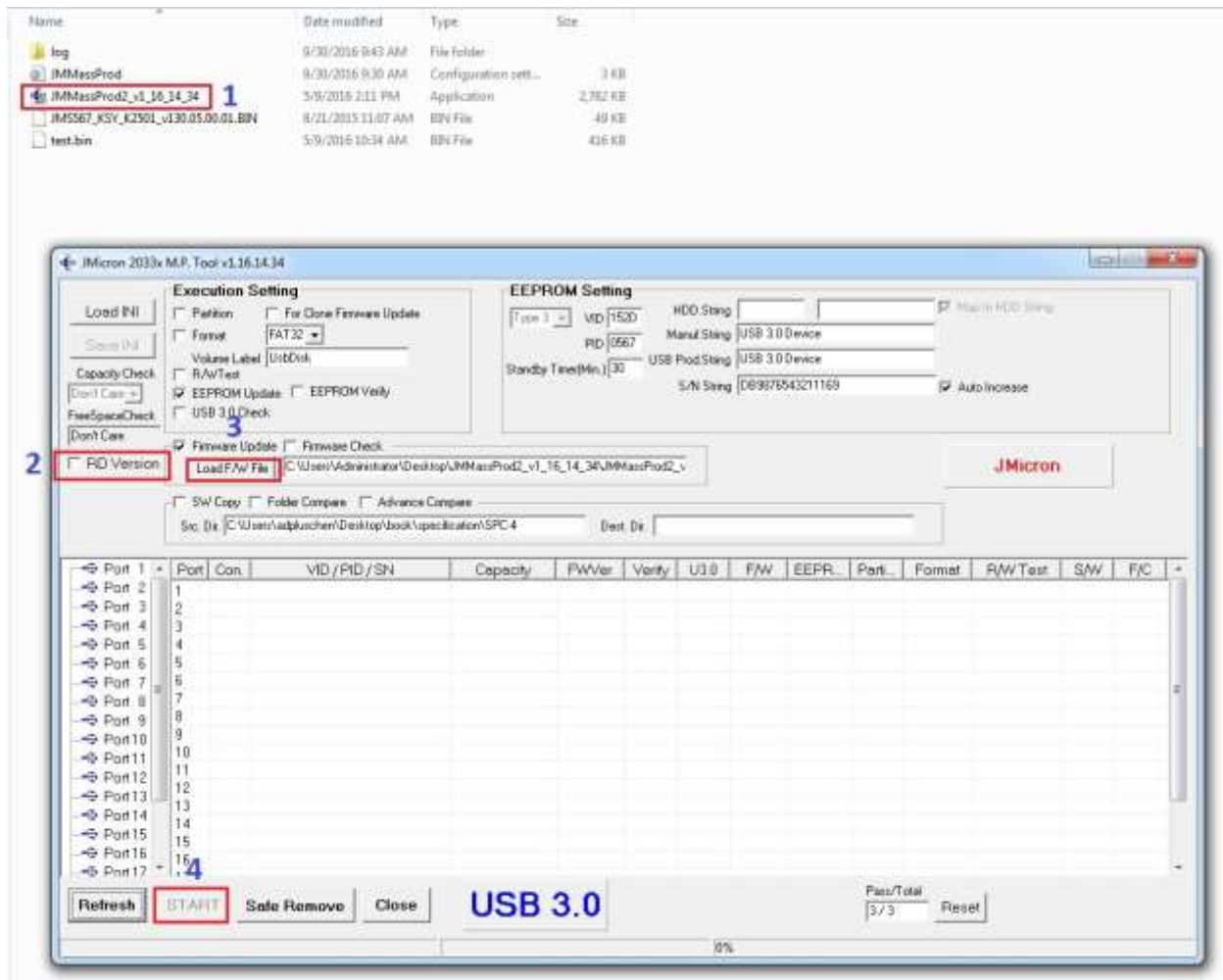


Instruction for Firmware Update to enable HDD String



- 1) Run **JMMassProd2_v1_16_14_34** firmware update tool
- 2) Select **RD Version** and type in **jmicon** to unlock
- 3) Select **JMS567_KSY_K2501_v130.05.00.01** from **Load F/W File**
- 4) Select **START** to run the firmware update

When pass displaying on your screen now, the firmware update process is completed

Notes,

- Need to attach a hard drive for firmware update
- Can be connected to USB 2.0 or USB 3.0 port
- Firmware update only for Microsoft Windows OS