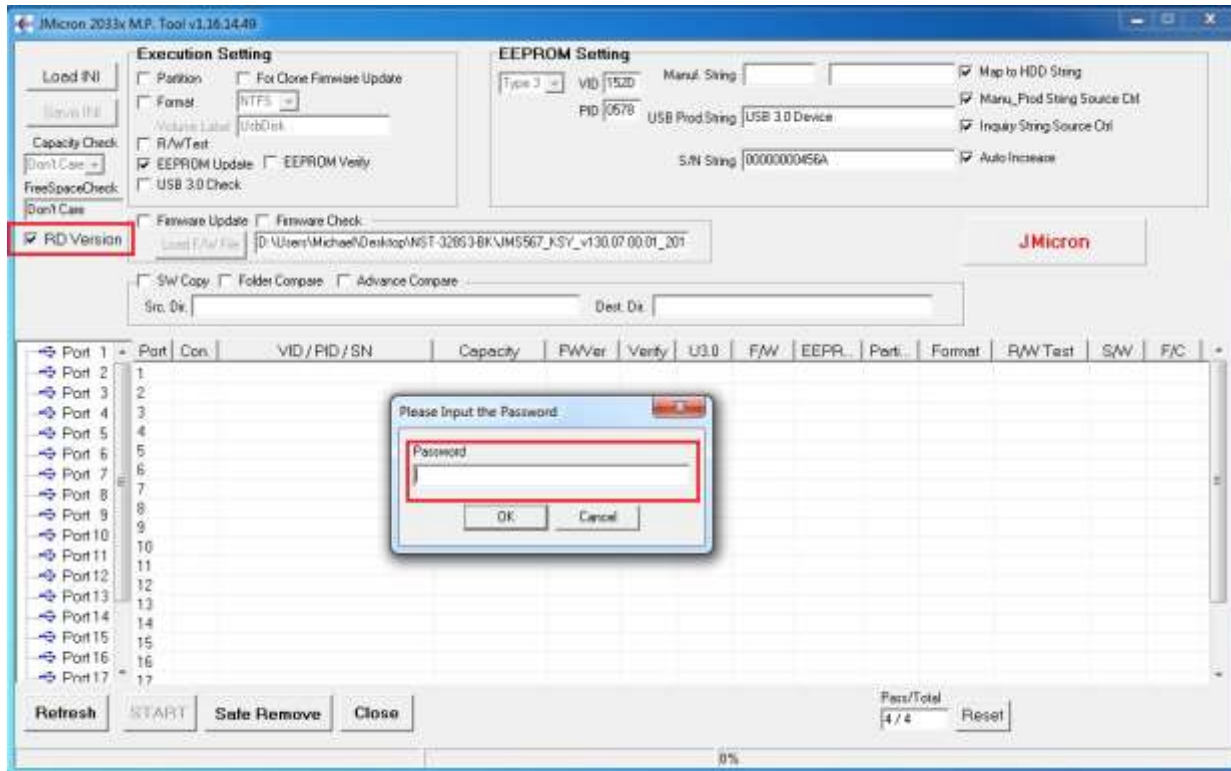


NST-328S3-BK and NST-D428S3-BK Firmware Update to correct HDD compatibility issue

- 1) Unzip JMS567_04212017.zip
- 2) Run JMMassProd2_v1_16_14_49
- 3) Select RD Version and password is jmicron to unlock the firmware update program



The screenshot shows the JMicron MP Tool v1.16.14.49 interface. The 'Execution Setting' dialog box is open, and the 'Load F/W File' button is highlighted with a red box. An 'Open' file dialog is also open, showing the file 'JMS567_KSV_v130/07.00.01_20170418.bin' selected. The background window shows the 'EEPROM Setting' and 'Execution Setting' tabs, with the 'Load F/W File' button highlighted in red. The 'Open' dialog shows the file 'JMS567_KSV_v130/07.00.01_20170418.bin' selected.

The screenshot shows the JMicron 2033x M.P. Tool v1.16.14.49 interface. The 'Execution Setting' tab is active, displaying various configuration options. The 'EEPROM Setting' tab is also visible, showing fields for VID (152D), PID (0578), and USB Prod String (USB 3.0 Device). The 'Port' list on the left shows Port 6 selected. The 'START' button is highlighted with a red box.

Execution Setting

- ☐ Partition ☐ For Clone Firmware Update
- ☐ Format **NTFS**
- Volume Label **USB3.0**
- ☐ RAW Test
- ☒ EEPROM Update ☐ EEPROM Verify
- ☒ USB 3.0 Check
- ☒ Firmware Update ☐ Firmware Check
- Load F/W File **C:\Users\Michael\Desktop\N5T-328538X\WTP-16002 JHMassProd2_v1_16_**
- ☐ SW Copy ☐ Folder Compare ☐ Advance Compare
- Src. Dir. **C:\Users\Michael\Desktop\N5T-328538X\WTP-16002 JHMassProd2_v1_16_** Dest. Dir. **C:\Users\Michael\Desktop\N5T-328538X\WTP-16002 JHMassProd2_v1_16_**

EEPROM Setting

- Type **3** VID **152D** HDD String **152D** ☒ Skip to HDD String
- PID **0578** Manuf String **JMicron**
- Standby Time (Min.) **30** USB Prod String **USB 3.0 Device**
- S/N String **00000000456A** ☒ Auto Increase

Port

Port	Con.	VID / PID / SN	Capacity	PWVer	Verify	U3B	F/W	EEPR.	Part.	Format	R/W Test	SW
Port 1	1											
Port 2	2											
Port 3	3											
Port 4	4											
Port 5	5											
Port 6	6	3.0 152D / 0578 / 000000004569	953869 MB	130.07.00.01								
Port 7	7											
Port 8	8											
Port 9	9											
Port 10	10											
Port 11	11											
Port 12	12											
Port 13	13											
Port 14	14											
Port 15	15											
Port 16	16											
Port 17	17											

Buttons: Refresh, **START**, Safe Remove, Close

USB 3.0

Progress Bar: 4 / 4

Reset