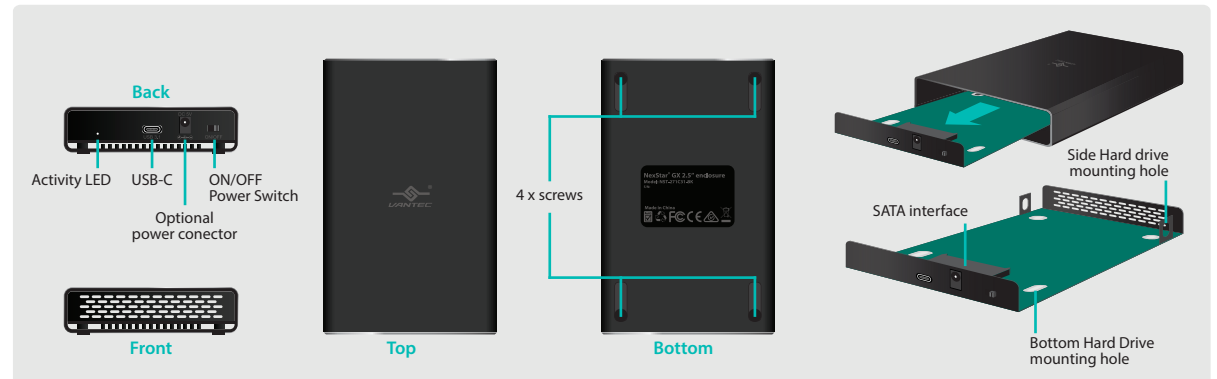
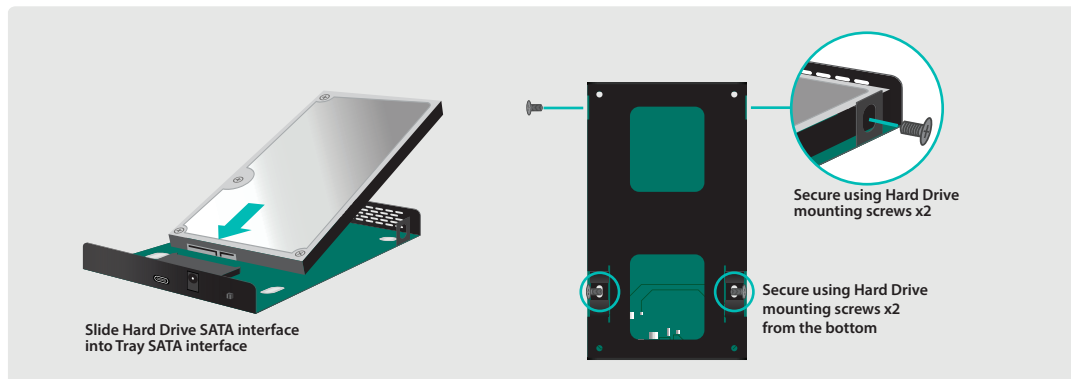


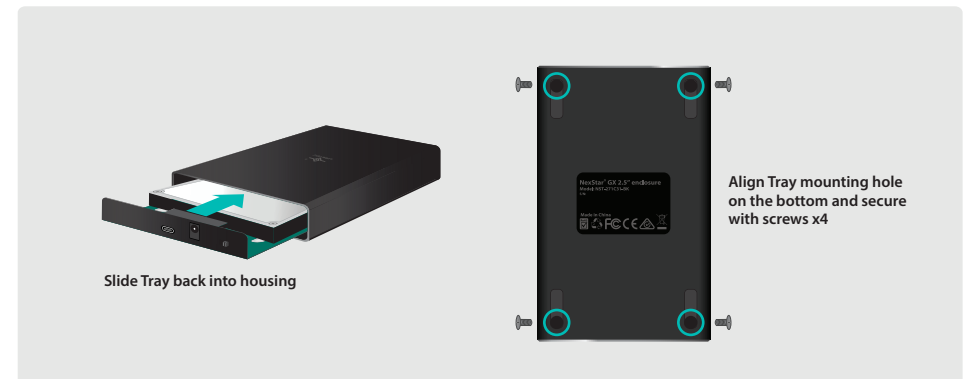
### 1. Verify the package contents.



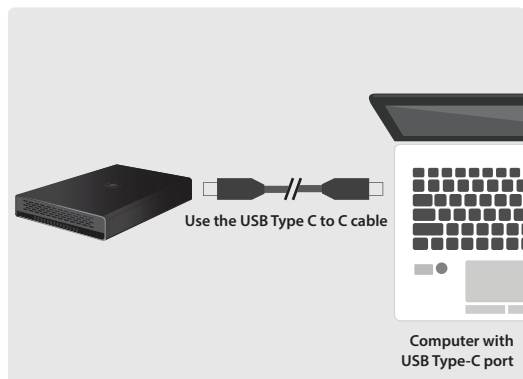
### 2. Parts Layout



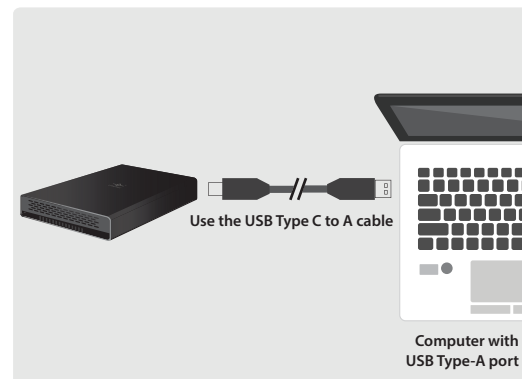
### 3. Secure SATA Hard Drive into Tray



### 4. Secure Tray to enclosure housing



### 5a. If your Computer comes with USB-C port



### 5b. If your Computer comes with USB-A port

- You can connected and disconnect USB devie with out shutting down the system. When disconnecting this enclosure from your system, please use USB "Safe to Remove" function to eject before unplugging the USB device.
- If you install a new hard drive into the enclosure, please initialize, partition and format the drive using the OS system tools before you can use it. For Windows System, use Disk Management. For Apple OS X system, use Disk Utility.
- If System is not recognizing the connected USB device, try the following:
  - Check both ends of the connection, the Enclosure and the System for loose connection.
  - Try other USB ports.
  - Try a different computer to see if the problem is related to this computer USB port problem.
  - Use OS system tool to check the status of the physical disk in disk management or disk utility.