

Firmware Update to 150708_B1_01_03

Unzip NST-370A31_B10103.zip and Run MPTool.exe

Format: TYPE1 Vendor ID: 174C Product ID: 1351 Device Revision: 0100

Device Configuration

Serial Number: [Empty] Input From Barcode [Unselected] Input From HDDSN [Selected]
S/N CHK [Selected] S/N Increase [Selected]

Manufacturer String: Generic

Product String: USB3.1 Device

Idle Timer: Never

Device Function

USB Status: USB 2.0

MP Auto Mode: [Unselected] Update Config [Selected]
Update FW [Selected] Reload FW [Unselected]

Partition / Format: Type: FAT32

Drive Label: NEW DISK

Partion Type: MBR

W/R Test: [Unselected] Preload Files: [Unselected]
Speed Test: Read: [Empty] Write: [Empty]
Auto Safe Remove After: 0 Seconds

FW Browser: D:\qqla\A\SMEDIA\A\SM135X\141224_B1_01_02.bin

Preload Browser: C:\test

Port#	Status	VID	PID	Serial Number	FW Version	Capacity	Config Upd...	FW Update	ReLink	Partiti...	Format	R/W Test	Preload
0	SUP...	174C	55...	W381YX1W0000	150708b10103	232 GB							
1													
2													
3													
4													
5													
6													
7													
8													

Pass: 0 Fail: 0 Total: 0 Progress Bar: Progress 0%

Unlock password: asmedia

Format: TYPE1 Vendor ID: 174C Product ID: 1351 Device Revision: 0100

Device Configuration

Serial Number: [Empty] Input From Barcode [Unselected] Input From HDDSN [Selected]
S/N CHK [Selected] S/N Increase [Selected]

Manufacturer String: Generic

Product String: USB3.1 Device

Idle Timer: Never

Device Function

USB Status: USB 2.0

MP Auto Mode: [Unselected] Update Config [Selected]
Update FW [Selected] Reload FW [Unselected]

Partition / Format: Type: FAT32

Drive Label: NEW DISK

Partion Type: MBR

W/R Test: [Unselected] Preload Files: [Unselected]
Speed Test: Read: [Empty] Write: [Empty]
Auto Safe Remove After: 0 Seconds

FW Browser: D:\qqla\A\SMEDIA\A\SM135X\141224_B1_01_02.bin

Preload Browser: C:\test

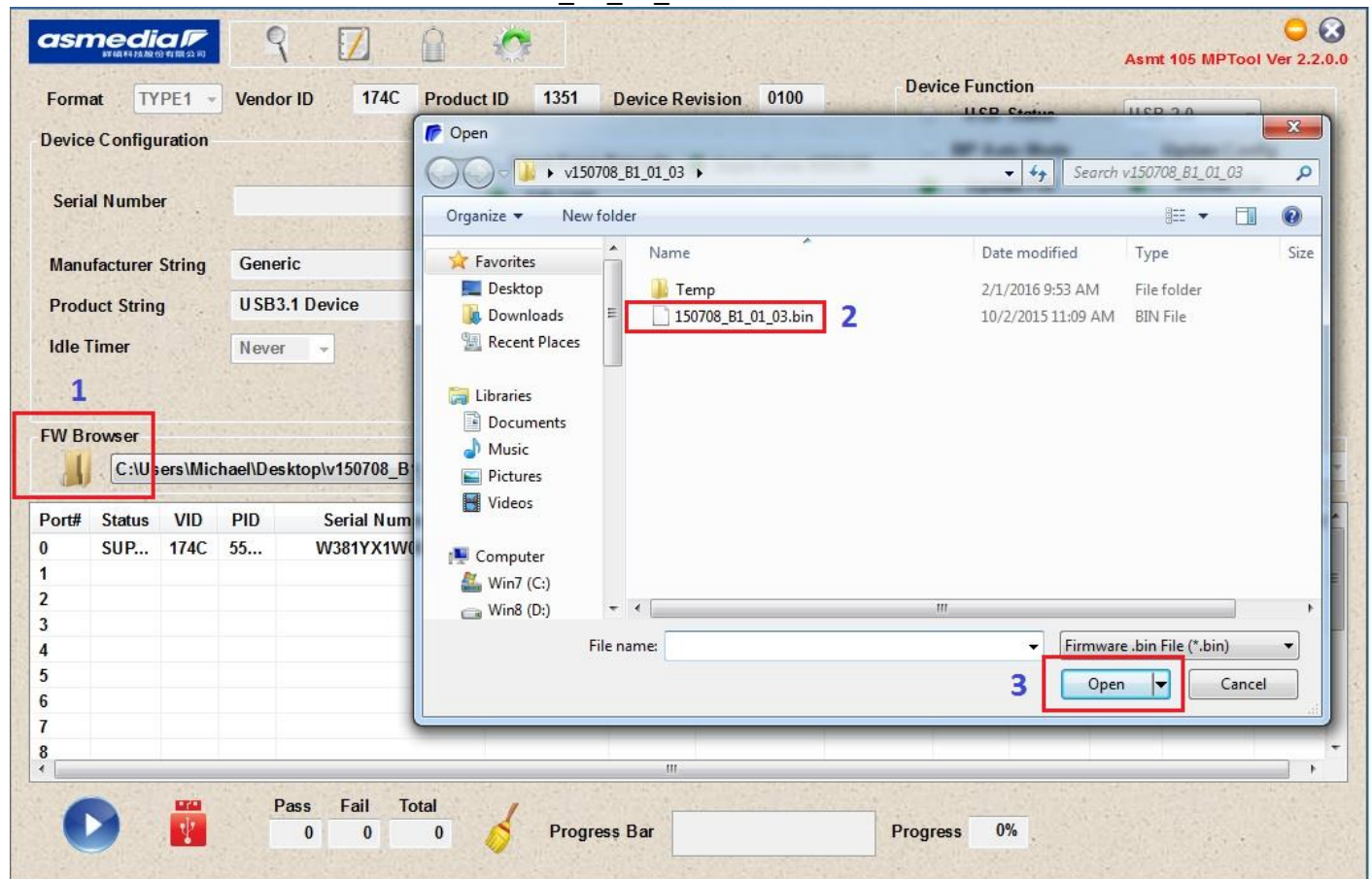
Login dialog box: Password [Empty] Ok Cancel

Port#	Status	VID	PID	Serial Number	FW Version	Capacity	Config Upd...	FW Update	ReLink	Partiti...	Format	R/W Test	Preload
0	SUP...	174C	55...	W381YX1W0000	150708b10103	232 GB							
1													
2													
3													
4													
5													
6													
7													
8													

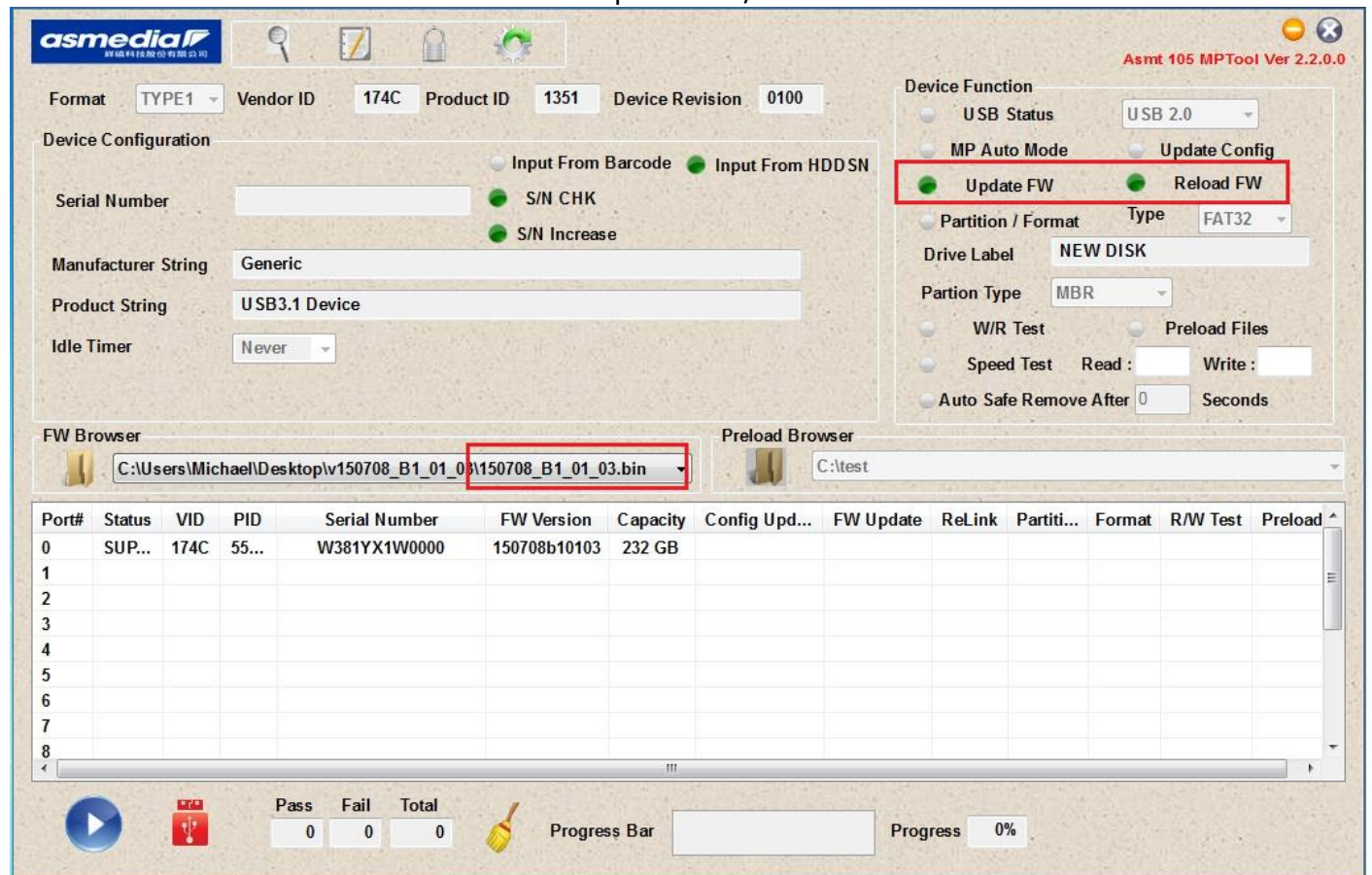
Pass: 0 Fail: 0 Total: 0 Progress Bar: Progress 0%

Firmware Update to 150708_B1_01_03

FW Browse and select firmware file 150708_B1_01_03.bin



Make sure the correct firmware is loaded and Update FW / Reload FW is selected



Firmware Update to 150708_B1_01_03

Click start to run the update until progress bar 100% and PASS is displaying on the screen

Now the enclosure firmware version is updated to 150708_B1_01_03

The screenshot shows the Asmedia MPTool Ver 2.2.0.0 interface. At the top, the 'Format' is set to 'TYPE1', 'Vendor ID' is '174C', 'Product ID' is '1351', and 'Device Revision' is '0100'. The 'Device Configuration' section includes fields for 'Serial Number', 'Manufacturer String' (Generic), 'Product String' (USB3.1 Device), and 'Idle Timer' (Never). The 'Device Function' section has several options, with 'Update FW' and 'Reload FW' selected. The 'FW Browser' shows the file 'C:\Users\Michael\Desktop\v150708_B1_01_03\150708_B1_01_03.bin'. The 'Preload Browser' shows 'C:\test'. A table at the bottom displays the update results for port 0, showing a successful update to version 150708b10103. The bottom status bar shows a green progress bar at 100% and a large 'PASS' message.

Format: TYPE1 Vendor ID: 174C Product ID: 1351 Device Revision: 0100

Device Configuration

Serial Number: S/N CHK S/N Increase

Manufacturer String: Generic

Product String: USB3.1 Device

Idle Timer: Never

Device Function

USB Status: USB 2.0

MP Auto Mode: Update Config

Update FW: Reload FW

Partition / Format Type: FAT32

Drive Label: NEW DISK

Partition Type: MBR

W/R Test: Preload Files

Speed Test Read: Write:

Auto Safe Remove After 0 Seconds

FW Browser: C:\Users\Michael\Desktop\v150708_B1_01_03\150708_B1_01_03.bin

Preload Browser: C:\test

Port#	Status	VID	PID	Serial Number	FW Version	Capacity	Config Upd...	FW Update	ReLink	Partiti...	Format	R/W Test	Preload
0	SUP...	174C	55...	W381YX1W0000	150708b10103	232 GB		PASS	PASS				
1													
2													
3													
4													
5													
6													
7													
8													

Pass: 1 Fail: 0 Total: 1

Progress Bar: 100 %

PASS