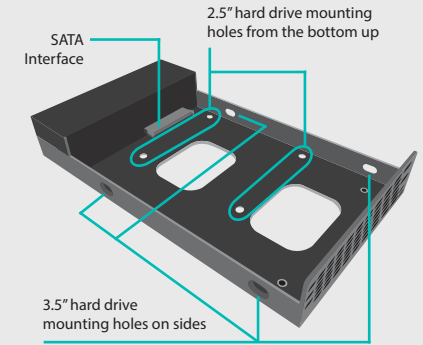
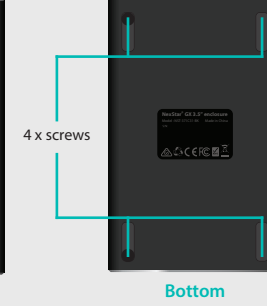
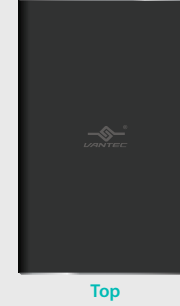
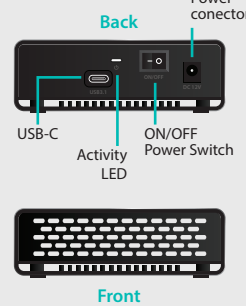


- | | | |
|--|--|-------------|
| 3.5" HDD mounting (Longer) screws x 4 | | Rubber Feet |
| 2.5" HDD mounting (Shorter) screws x 4 | | |
| Tray mounting (Shorter) screws x 4 | | |

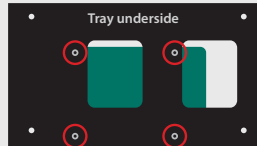
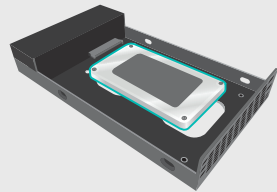


1. Verify the package contents

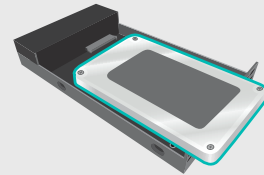


2. Parts Layout

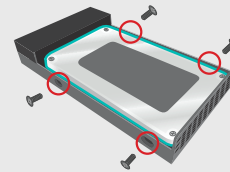
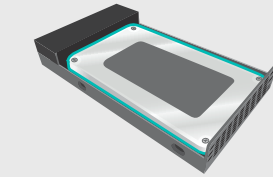
For 2.5", place drive show and slide drive towards SATA interface. Make sure SATA interface on both drive and enclosure are connected securely and secure using 4 short screws from the underside.



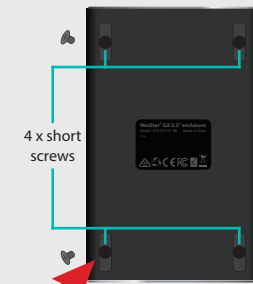
3a. Secure SATA Hard Drive into Tray



For 3.5", place drive show and slide drive at an angle towards SATA interface until the drive can place flat into the tray. Once laying flat, push the drive in the direction of the SATA interface to connected securely. Secure using 4 long screws from the side (two on each side).



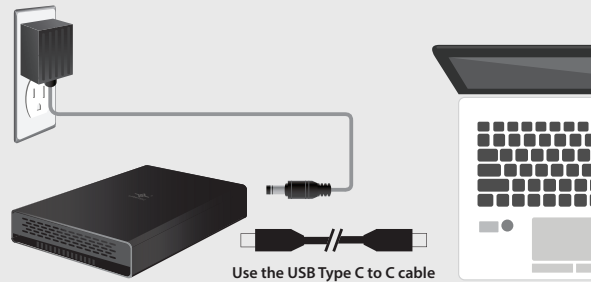
3b. Secure SATA Hard Drive into Tray



Align Tray mounting hole on the bottom and secure with 4 short screws design for the enclosure

After securing the enclosure, use the rubber feet provided to cover up the screw holes

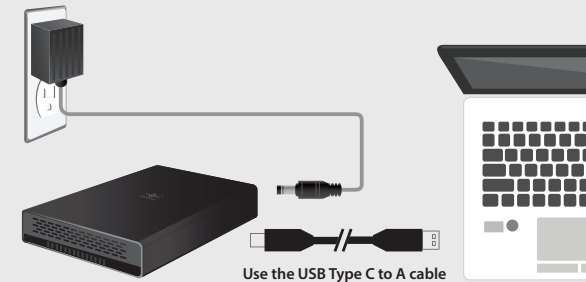
4. Secure Tray to enclosure housing



Use the USB Type C to C cable

Computer with USB Type-C port

5a. If your Computer comes with USB-C port



Use the USB Type C to A cable

Computer with USB Type-A port

5b. If your Computer comes with USB-A port

- You can connected and disconnect USB device without shutting down the system. When disconnecting this enclosure from your system, please use USB "Safe to Remove" function to eject before unplugging the USB device.
- If you install a new hard drive into the enclosure, please initialize, partition and format the drive using the OS system tools before you can use it. For Windows System, use Disk Management. For Apple OS X system, use Disk Utility.
- If System is not recognizing the connected USB device, try the following:
 - Check both ends of the connection, the Enclosure and the System for loose connection.
 - Try other USB ports.
 - Try a different computer to see if the problem is related to this computer USB port problem.
 - Use OS system tool to check the status of the physical disk in disk management or disk utility.