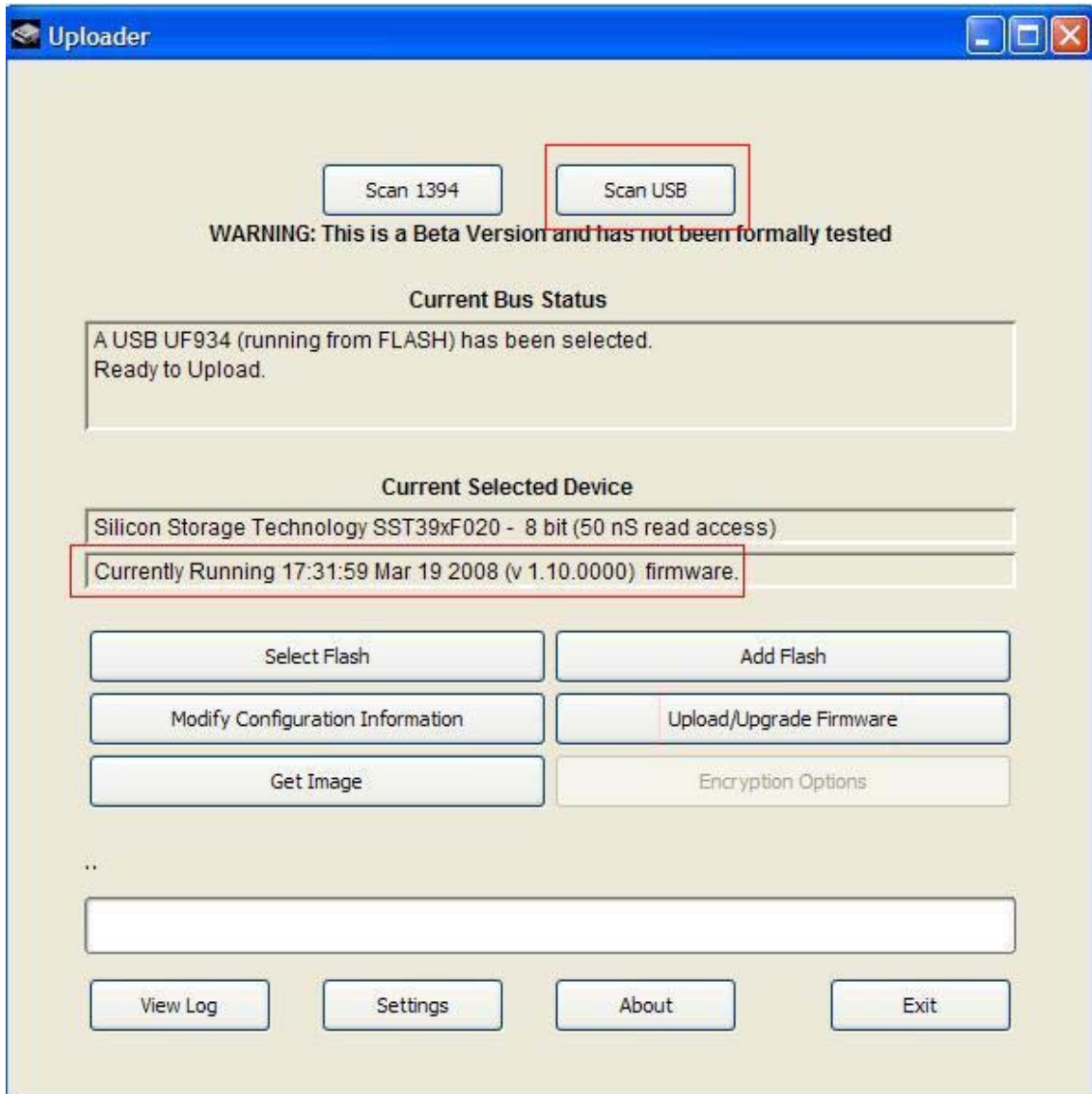


NST-D100FBSU

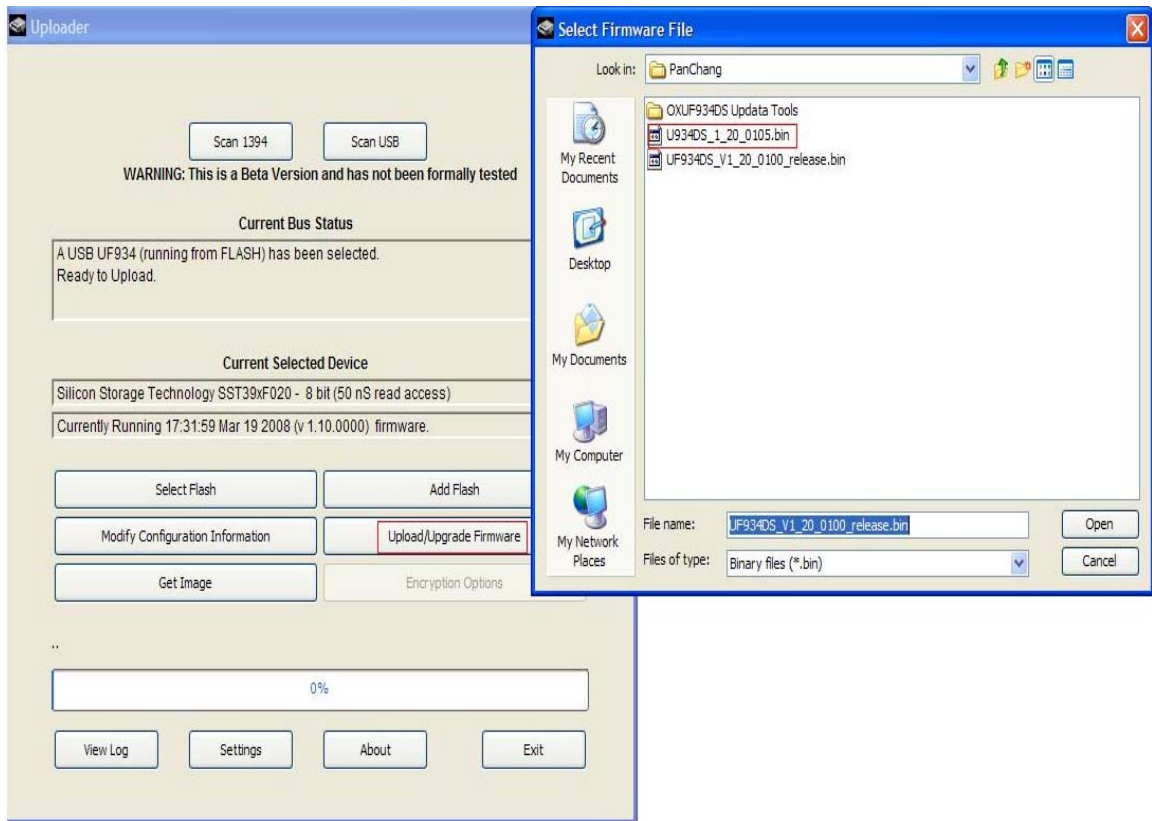
Firmware and configuration update to support 3TB hard drive.

Install and Run the Oxsemi Uploader\_3\_03\_0000\_0004.exe from Windows XP.

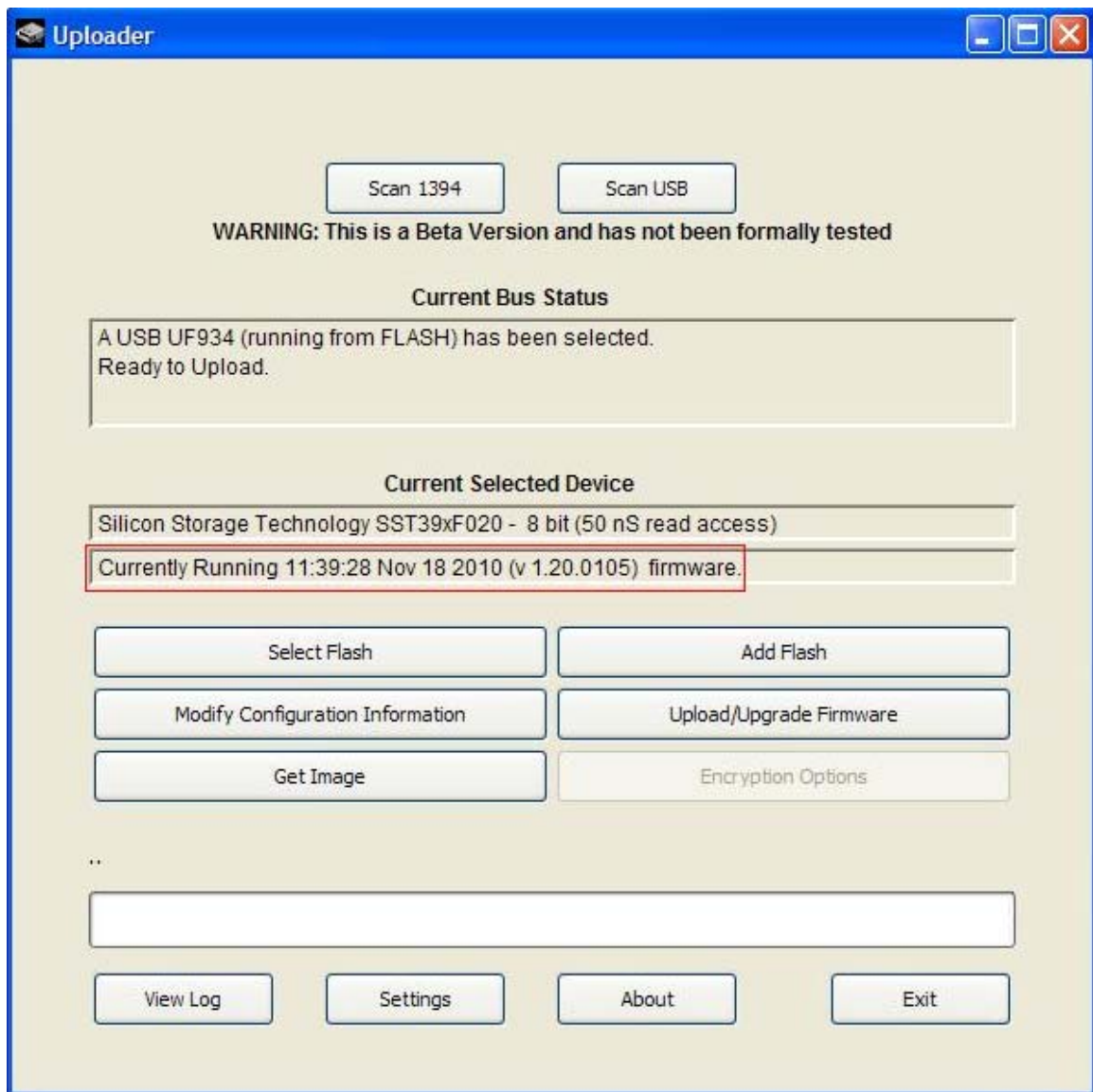
1. "Scan USB" and check the firmware version before update



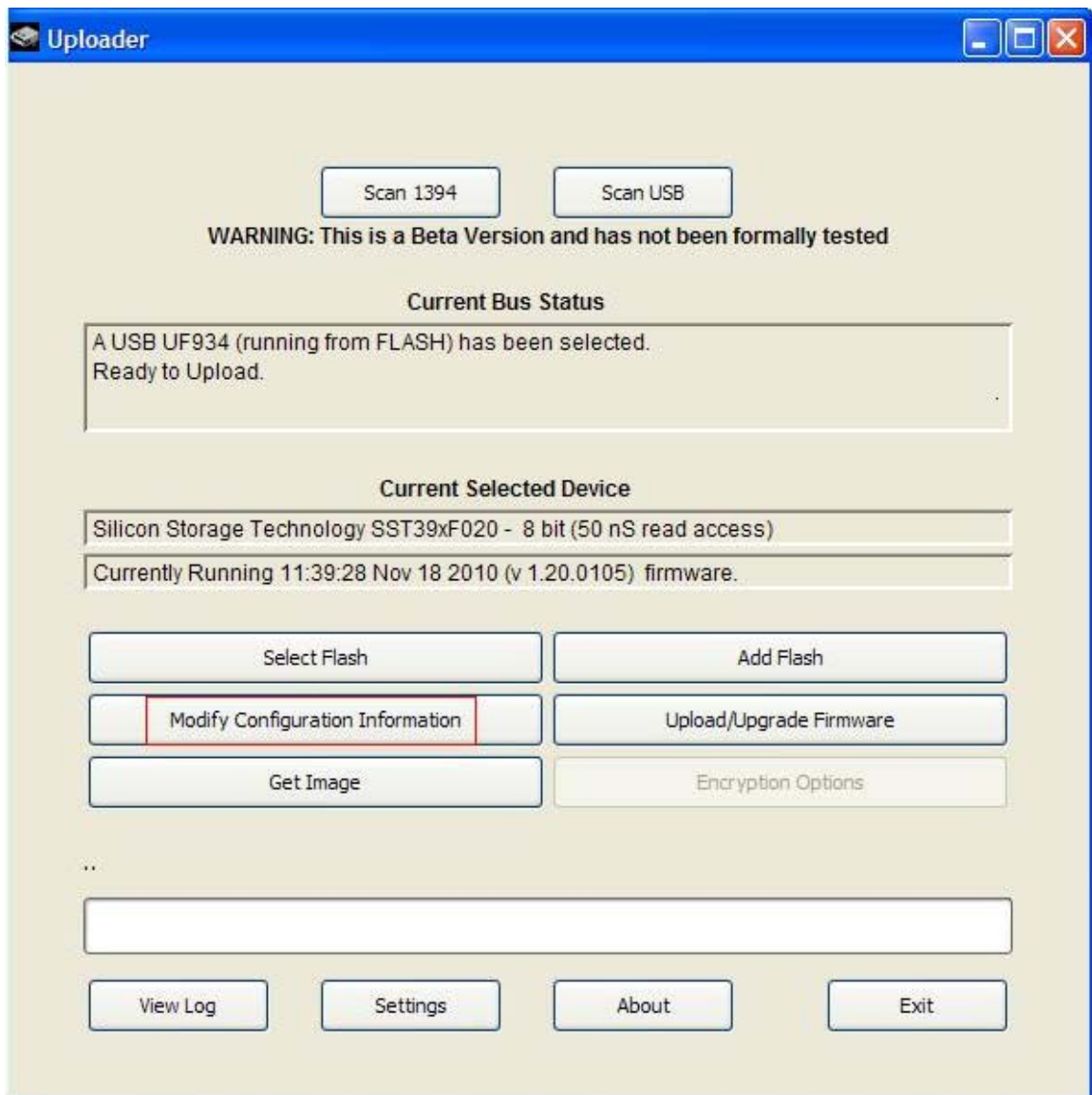
2. "Upload/Upgrade Firmware" and open file U934DS\_1\_20\_0105.bin



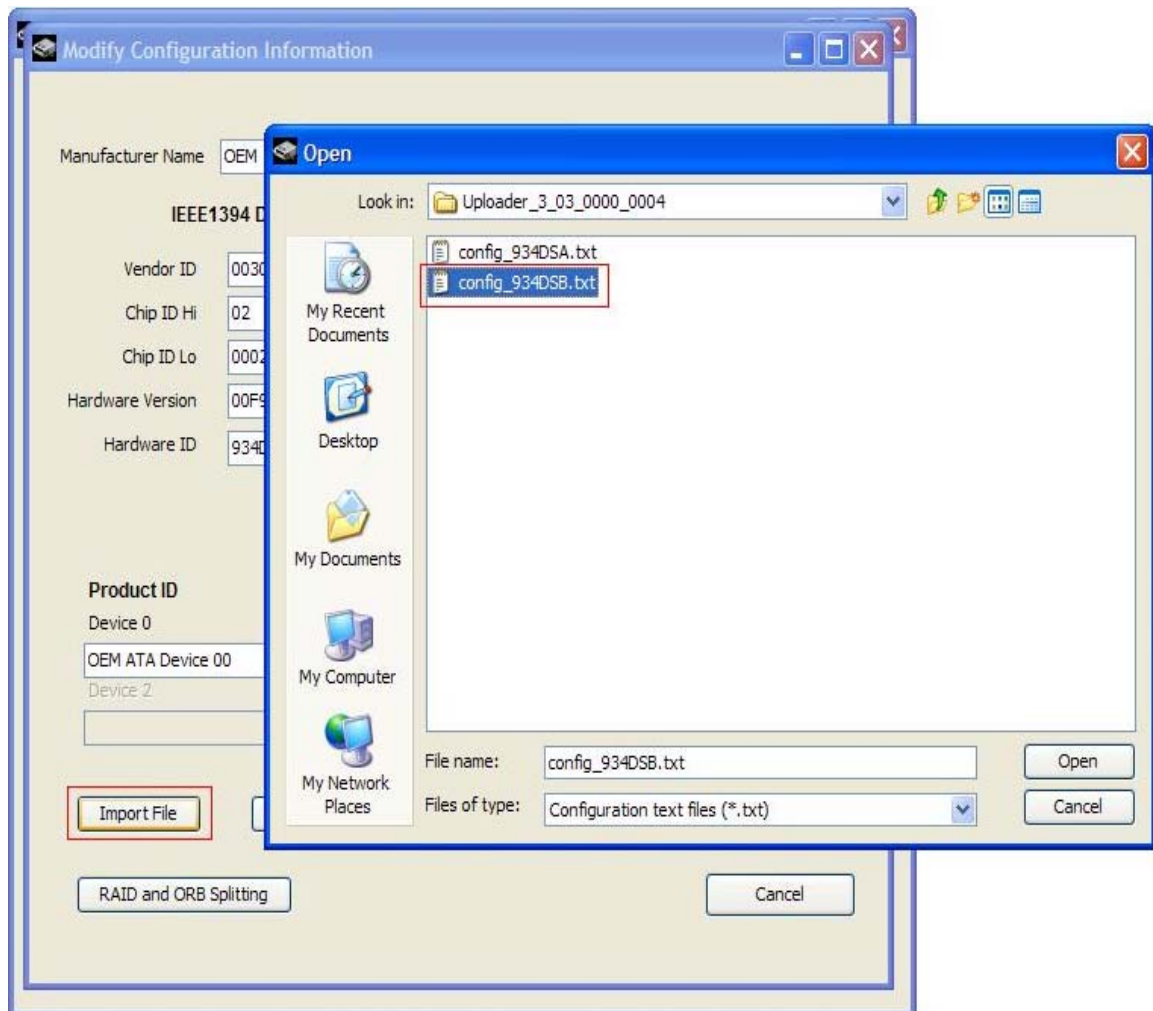
### 3. Version 1.20.0105 after updated



#### 4. "Modify Configuration Information"



5. "Import File" and load config\_934DSB.txt



6. From Modify Configuration Information page click OK and "Upload Changes"

The screenshot shows the 'Modify Configuration Information' window. At the top, the title bar reads 'Modify Configuration Information'. Below the title bar, there is a text field for 'Manufacturer Name' containing 'OEM'. The main area is divided into two sections: 'IEEE1394 Details (1 Unit)' and 'USB Details (Version 1)'. The 'IEEE1394 Details' section includes fields for 'Vendor ID' (0030E0), 'Chip ID Hi' (02), 'Chip ID Lo' (000283), 'Hardware Version' (00F93), and 'Hardware ID' (934D9). The 'USB Details' section includes fields for 'Vendor ID' (928), 'Product ID' (A), and 'Release Version' (0). Below these sections, there are fields for 'Product ID' and 'Device 0' (OEM ATA Device 00), 'Device 1' (OEM ATA Device 01), 'Device 2', and 'Device 3'. At the bottom, there are buttons for 'Import File', 'Export File', 'Advanced', 'Upload Changes', 'RAID and ORB Splitting', and 'Cancel'. An 'Uploader' dialog box is overlaid on the main window, displaying the message 'Configuration file loaded successfully.' and an 'OK' button. The 'Upload Changes' button in the main window is highlighted with a red rectangle.

Manufacturer Name: OEM

**IEEE1394 Details (1 Unit)**

Vendor ID: 0030E0  
Chip ID Hi: 02  
Chip ID Lo: 000283  
Hardware Version: 00F93  
Hardware ID: 934D9

**USB Details (Version 1)**

Vendor ID: 928  
Product ID: A  
Release Version: 0

**Product ID**

Device 0: OEM ATA Device 00  
Device 1: OEM ATA Device 01  
Device 2:   
Device 3:

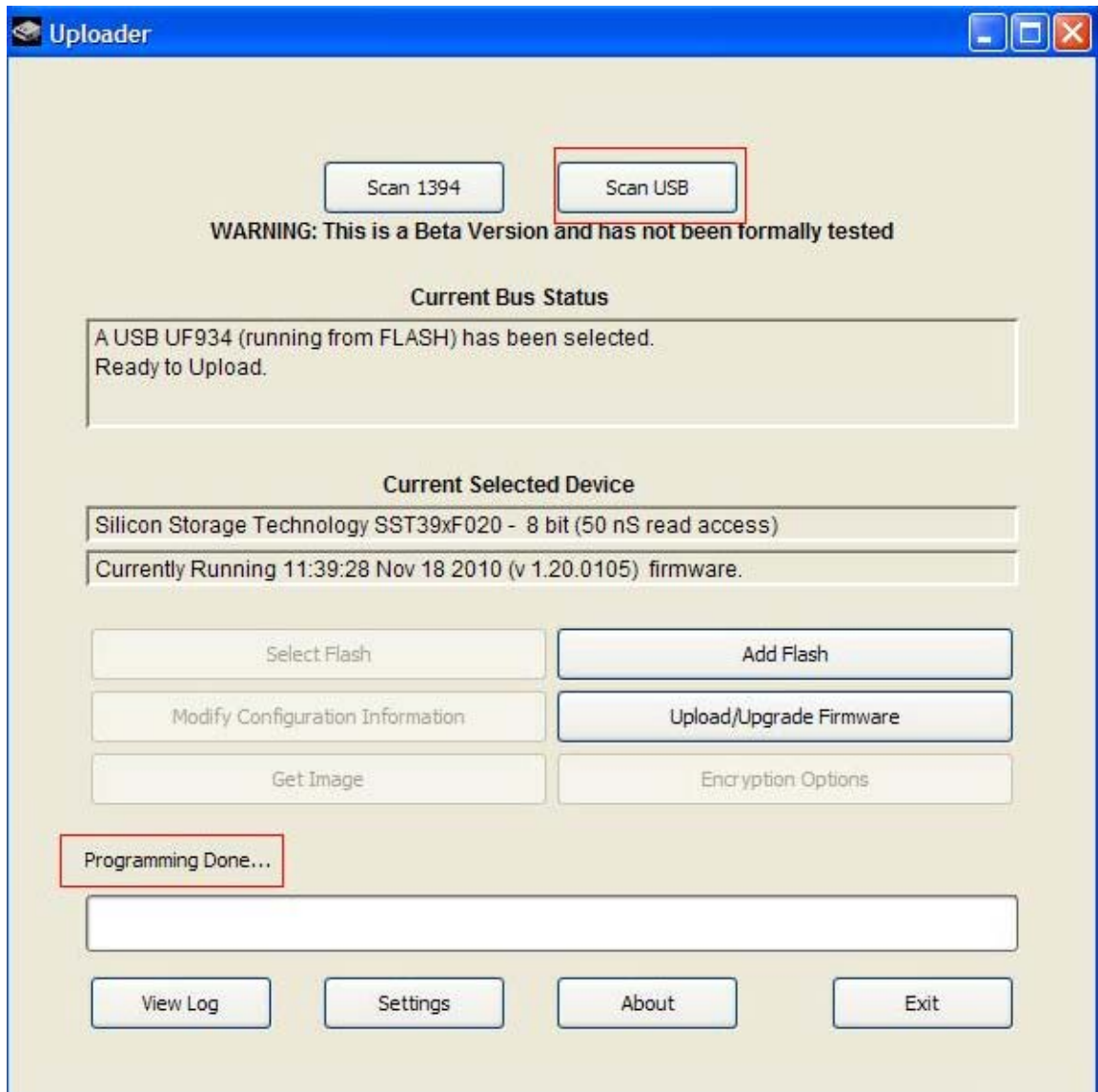
Buttons: Import File, Export File, Advanced, Upload Changes, RAID and ORB Splitting, Cancel

**Uploader**

Configuration file loaded successfully.

OK

7. After Programming Done click "Scan USB" again





8. Verify the setting after updated  
"Enable >2.2TB Capacity"

