

# Thank You

For Choosing VantecUSA Product.

We are committed to providing you with the best service and support. If you have a problem with installing, getting the product to function or other product related question, please feel free to write to us. We will help you answer your question.

You can write to us at : [support@vantecusa.com](mailto:support@vantecusa.com)

For the latest Drivers, Manual and Frequently Asked Questions (FAQ), they are available at our website at [vantecusa.com](http://vantecusa.com) or write to us.

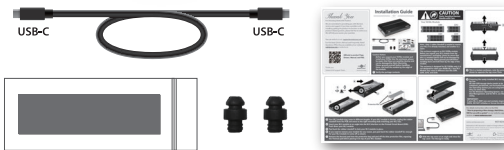


QRCode to product Page,  
Drivers, Manual, and FAQ.

Thank you,  
VantecUSA Support Team.



## Installation Guide



### 1 Verify the package contents.

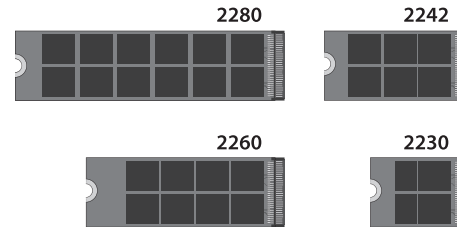
**Note:**  
Only 1 rubber Standoff is needed to mount your M.2; it is already mounted, and another is a spare.



## CAUTION

Static Sensitive Devices  
Handle with Care

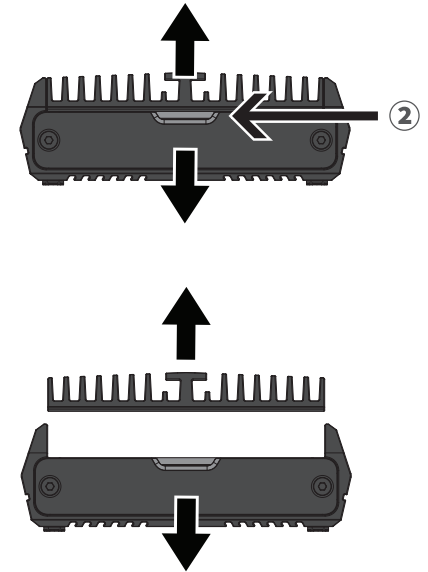
### Your NVMe Module



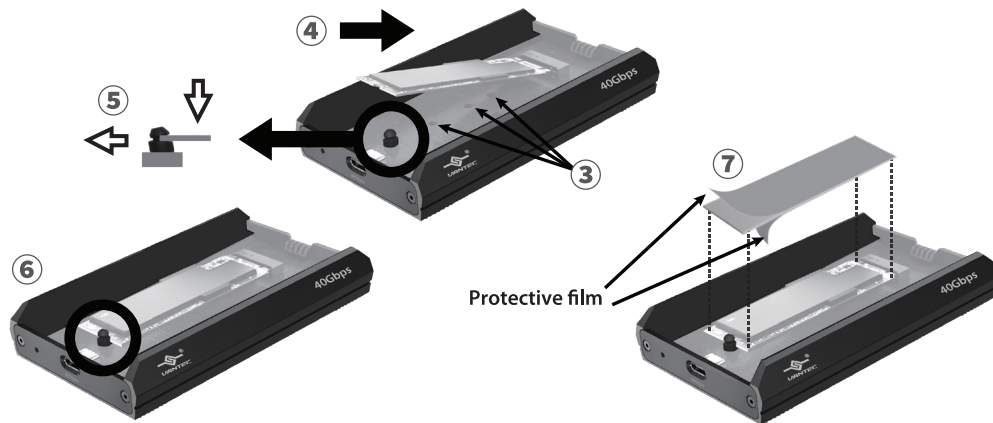
### Caution Notice:

This enclosure supports an M.2 NVMe module only; it is NOT designed for other NON-NVMe M.2. Your M.2 Module may come in different sizes like 2280, 2260, 2242, and 2230.

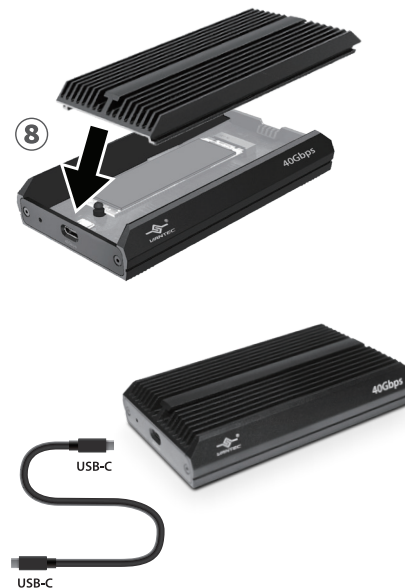
Before you unpack your NVMe module from the manufacturer's packaging, please be aware that this is a sensitive device and can be damaged by Static Electricity. Please ground yourself before handling them and hold them by the edge of the module.



### 2 This is a toolless enclosure, note the arrow shown to separate the top cover Plate.



- 3 Your M.2 module may come in different lengths. If your M.2 module is shorter, unplug the rubber standoff from the PCB and move to the right mounting hole matching your M.2 size.
- 4 Insert your M.2 module at an angle into the M.2 interface on the Printed Circuit Board (PCB). Push down your M.2 module.
- 5 Peel back the rubber standoff to lock your M.2 module in place.
- 6 If you need to remove your module for any reason, just peel back the rubber standoff far enough for your M.2 module to come off as shown.
- 7 Remove the thermal pad from the protective bag and peel off the blue protective film, exposing the Thermal pad before placing it on top of your M.2 module



### 8 Slide the top cover at an angle and close the top cover. The Storage is ready.

- 9 Preparing the newly installed M.2 storage for use:  
All new USB storage device needs to be initialized, partitioned, and formatted for the Operating System you are using before they can store data.  
For the Windows Operating System, use Disk Management, and for OS X, use Disk Utility.

**IMPORTANT:**  
If your M.2 is NOT new and contains important DATA, DO NOT initialize or format the drive.

For detail, instruction refers to the FAQ  
"How to preparing a New storage, Hard Drive, or SSD for use with a system" on our website support section at [www.vantecusa.com](http://www.vantecusa.com)

[www.vantecusa.com](http://www.vantecusa.com)

NST-M240C4

Information in this document is subject to change without notice.  
Reproduction of these materials in any manner whatsoever without written permission is strictly forbidden.



v1.0



Printed on  
Recycled Paper.

Copyright © 2025 Vantec Thermal Technologies. All Rights Reserved.  
All Registered Trademarks Belong to Their Respective Companies.