

There are two version of the manual (version 1 and version 2).

Please refer the right version for your product.



SATA / IDE to USB 2.0 Adapter

SUPPORTS 2.5" & 3.5" SATA OR PATA(IDE) HARD DRIVES & SSDS

MANUAL

www.vantecusa.com

Copyright © 2011 Vantec Thermal Technologies. All Rights Reserved.

Package Contents:

1. SATA/IDE To USB 2.0 Adapter
2. Power Adapter With On/Off Switch
3. Power Cable
4. SATA Data Cable
5. SATA Power Supply Cable
6. User Manual



TRADEMARKS

Apple, Macintosh and Mac are trademarks of Apple Computer. MS-DOS, Microsoft, Windows XP/ Vista / 7 are trademarks of Microsoft Corporation.

*All other third-party brands and names are the property of their respective owners.

Table of Contents:

1. Introduction	pg. 2
2. Specifications/Features	pg. 2
3. System Requirements	pg. 3
4. Hardware Installation	pg. 3
5. Disconnecting	pg. 8
6. Creating A New Partition	pg. 9
7. Troubleshooting/FAQ	pg. 11
8. Warranty	pg. 13
9. Contact	pg. 13

1. Introduction

The SATA/IDE to USB 2.0 Adapter gives you the flexibility of connecting almost any drive to computer via USB. Whether it may be a SATA or IDE, 3.5" or 2.5", hard drives, CD/DVD-rom, Blu-ray, etc—connecting your device has never any easier. The adapter also supports hot-swap allowing you to connect and disconnect your device without the need of restarting your computer. An external power adapter is included which will allow you to power your drives outside your system giving you the ability to quickly add or swap devices without opening your case. The SATA/IDE to USB 2.0 Adapter is ideal tool for anyone needing to access a hard drive or device on the fly.

2. Specifications/Features:

SATA/IDE-USB Adapter:

Specifications:

- Model: CB-ISATAU2
- Interface: USB 2.0
- Supported Devices: IDE & SATA 1.5Gb/s, SATA 3Gb/s, SATA 6Gb/s
SSDs, Hard Drives, CD/DVD/Blu-ray Drives
- Drive Size: 2.5" & 3.5" & 5.25"
- Power Supply: AC Adapter
- Dimensions: 70 x 43 x 10 mm

Features:

- Compact And Light Design For Easy Storage
- Supports 2.5" & 3.5" SATA or PATA(IDE) Hard Drives
- Supports 5.25" Optical CD/DVD/Blu-ray Drives
- Hot-Swappable: Plug & Play Without Rebooting

3. System Requirements:

Microsoft Windows XP/Vista/7 (32/64 Bit)

Mac OS X 10.4+

For USB 2.0 Speeds, The System Must Support USB 2.0 Specifications

4. Driver Installation:

No drivers are needed.

The SATA/IDE to USB 2.0 adapter uses standard USB 2.0 drivers.

Installing the SATA/IDE-USB Adapter for internal use with 2.5" IDE Hard Drive:

1. Open computer case.
2. Connect the smaller 44-pin IDE connector of the SATA/IDE-USB Adapter to the hard drive.
3. Connect USB connector of SATA/IDE-USB Adapter to an available internal or external USB port.
4. Close computer case.



2.5" IDE HDD

Installing the SATA/IDE-USB Adapter for internal use with 3.5"/5.25" IDE Drive:

1. Open computer case and find an available 3.5"/5.25" bay.
2. Insert drive and mount with screws.
3. Connect the larger 40-pin IDE connector of the SATA/IDE-USB Adapter to the hard drive.
4. Connect a 4-pin power connector from power supply to hard drive. (Do not need to use supplied power adapter for internal use)
5. Connect USB connector of SATA/IDE-USB Adapter to an available internal or external USB port.
6. Close computer case.



3.5" IDE HDD

Installing the SATA/IDE-USB Adapter for external use with 2.5" IDE Hard Drive:

1. Connect the smaller 44-pin IDE connector of the SATA/IDE-USB Adapter to the hard drive.
2. Connect USB connector of IDE-USB Adapter to an available USB Port.



2.5" IDE HDD

Installing the SATA/IDE-USB Adapter for external use with 3.5" IDE Hard Drive:

1. Connect the larger 40-pin IDE connector of the SATA/IDE-USB Adapter to the hard drive.
2. Connect Power Cable to Power Adapter. Plug Power Cable into a live outlet.
3. Connect Power Adapter to hard drive.
4. Connect USB connector of IDE-USB Cable Adapter to an available USB port.



3.5" IDE HDD

Installing the SATA/IDE-USB Adapter for internal use with 2.5"/3.5" SATA Hard Drive:

1. Open computer case.
2. Insert drive and mount with screws.
3. Using a SATA cable, connect the SATA port of the SATA/IDE-USB Adapter to the SATA connector on the hard drive hard drive.
4. Connect either a 4-pin power connector or SATA power connector from power supply to hard drive. Do not connect both. (Do not need to use supplied power adapter for internal use)
5. Connect USB connector of SATA/IDE-USB Adapter to an available internal or external USB port.
6. Close computer case.



2.5" SATA HDD



3.5" SATA HDD

Installing the SATA/IDE-USB Adapter for external use with 2.5" / 3.5" SATA Hard Drive:

1. Using a SATA cable, connect the SATA port of the SATA/IDE-USB Adapter to the SATA connector on the hard drive hard drive.
2. Connect Power Cable to Power Adapter. Plug Power Cable into a live outlet.
3. Connect Power Adapter to hard drive. If your drive does not have a 4-pin power connector, you will need to use a SATA power adapter.
4. Connect USB connector of SATA/IDE-USB Adapter to an available internal or external USB port.



2.5" SATA HDD



3.5" SATA HDD

Driver Installation:

No drivers are necessary. This device uses standard USB 2.0 drivers. If the hard drive does not appear under My Computer, make sure the drive is properly partitioned or formatted or initialized.

5. Disconnecting the SATA/IDE-USB Adapter:

Warning: NEVER remove the SATA/IDE-USB while the hard drive is in use. Doing so may cause data corruption or damage the hard drive, SATA/IDE-USB adapter, or computer.

Windows 98SE/ME/XP/2000:

1. Make sure all operations using the hard drive connected to the SATA/IDE-USB Adapter have ceased.
2. Close any windows and programs pertaining to the SATA/IDE-USB Adapter.
3. Double click the green "Unplug or Eject Hardware" icon in the system tray and select [Safely Remove Hardware]. Select the device you wish to remove and click on [Stop]. The system should prompt, "It is now safe to remove the USB device." If not, wait for any programs still using the device to finish and try again.
4. Unplug the USB cable from the system.
5. Disconnect power from the drive if desired.

Mac OS:

1. Make sure all operations using the hard drive connected to the SATA/IDE-USB Adapter have ceased.
2. Close any windows and programs pertaining to the SATA/IDE-USB Adapter.
3. From the Desktop, drag the SATA/IDE-USB Adapter hard drive to the trash.
4. Unplug the USB cable from the system.
5. Disconnect power from the drive if desired.

6. Detecting The Drive or Creating A New Partition:

Note: If it does not automatically detect, you may need to initialize or format the hard drive. This can be done through 'Disk Management' or 'Disk Utility.' Please refer to your hard drive manual for further instructions on how to initialize or format a hard drive.

Windows:

1. Right click on "My Computer" and choose Manage.
2. Under "Storage" on the LEFT pane, select Disk Management
3. Windows should now give you the option to initialize the disk. Continue through the wizard leaving the values at their defaults. If the wizard does not appear, locate the new drive in the lower right pane, right click on the new disk (where it reads "Disk #") and choose Initialize. (This step will only be required if a red error symbol is displayed.)
4. Locate your hard drive in the bottom right pane. Right click on the area with a status bar (to the right of the "Disk #" area) and choose New Partition.
5. Follow the directions of the wizard. The recommended partition type is "primary" and the recommended file system is "NTFS." Please note that Windows XP/2000 limits FAT32 partitions to only 32GB. Also, Windows 98 is not capable of reading the NTFS file system.
6. Once complete, you should now be able to see the drive in Windows Explorer.

7. Creating A New Partition (continued):

Mac OS X 10.x.x:

Initializing a Hard Drive:

1. Open Disk Utility (under Applications\Utilities)
2. Select the attached drive in the list to the left. Click it and then click the partition tab to the right.
3. Select the desired partitioning scheme.
4. Open the Type pop-up menu in the Volume Info area and choose Mac OS Extended Format.
5. Resize the volumes if desired.
6. When ready, click OK.
7. Click Initialize.

Notes:

If initialization fails, do the following:

1. Choose Initialization Options from the Functions menu.
 2. Click the checkbox next to "Low level format", then click OK.
- Choosing this option adds significant time to the initialization process.

Formatting a Hard Drive:

1. Start the Disk Utility tool (under Applications\Utilities)
2. Select the new hard drive you are trying to install
3. Click on the "Erase" tab
4. Choose a volume format and assign a name to the new drive.
5. Click on Erase.
6. Once complete, your new hard drive should be mounted on your desktop.

If the hard drive will not mount on your system:

Format the drive with a FAT32 or NTFS partition first through a PC system. Once formatted, connect the SATA/IDE-USB adapter to your Mac and run the Disk Utility tool again. You should now be able to format the drive into a Mac partition and mount the drive.

7. Troubleshooting/FAQ:

SATA/IDE-USB Adapter:

Q. What should the jumper settings on my hard drive be set to?

A. We recommend the hard drive be set to MASTER or SINGLE.

Q. Can I connect the SATA/IDE-USB Adapter to more than one drive at the same time?

A. No. The SATA/IDE-USB can not handle multiple drives at once. Connecting multiple drives will likely cause data corruption.

Q. My computer recognizes the SATA/IDE-USB Adapter, but it does not assign a drive letter to it.

A. You are probably using a brand new hard drive. If not, then your computer may not be able to recognize the partition on the hard drive because it is damaged or not a valid format. Please refer to the section "Creating A New Partition" for information on how to create a useable partition on your drive.

Q. My computer sometimes recognizes the IDE-USB Adapter, but sometimes gives me errors.

A. If your computer is giving you problems with the SATA/IDE-USB Adapter, be sure to connect the USB cable to a rear port, directly off the motherboard or USB PCI card. The cables connecting front USB ports are not always properly shielded and cannot properly handle USB 2.0 speeds, thereby corrupting the signal between the SATA/IDE-USB Adapter and the computer.

Q. Why can't I copy files larger than 4GB onto my SATA/IDE-USB Adapter?

A. You have probably formatted the hard drive in the FAT32 file system. FAT32 limits the file sizes to 4GB maximum. The NTFS file system does not have this limitation.

7. Troubleshooting/FAQ:

- Q. Why is the data on my hard drive corrupted?
- A. Connecting your hard drive to the SATA/IDE-USB Adapter is just like connecting a hard drive to the inside of your computer. The SATA/IDE-USB Adapter itself will not corrupt your data. If your data has become corrupt, it is likely caused by the removal of the SATA/IDE-USB Adapter while data was still being written to the hard drive. CAUTION: Never remove the SATA/IDE-USB Adapter while data is being written to the hard drive! Doing so may cause the hard drive to become corrupt. Make sure all applications being run off the disk and all files in use are no longer in use before removing the unit.

8. Warranty:

The SATA/IDE To USB 2.0 Adapter comes with a 1 year limited warranty (90 day parts). If your unit should become defective within that time frame, please go to <http://www.vantecusa.com> for information on how to receive warranty exchange or repair. Cosmetic defects and missing parts are not covered under this warranty. Please check the contents of the unit to make sure you received all parts. Also, check for any cosmetic flaws. If any parts are missing or if there are cosmetic defects, please contact the retailer from which you purchased the unit immediately and ask for a replacement.

9. Contact:

Vantec Thermal Technology
www.vantecusa.com



SATA/IDE to USB 2.0 Adapter

SUPPORTS 2.5", 3.5" & 5.25" IDE/SATA HARD DRIVES, SSDs, AND OPTICAL DRIVES

MANUAL

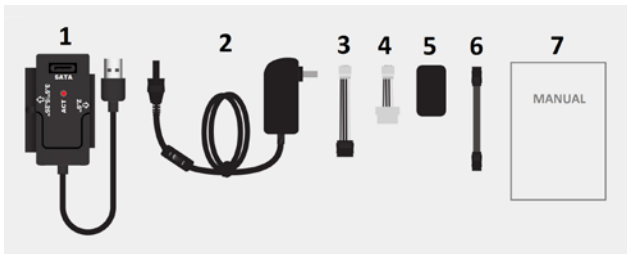
V2.00

www.vantecusa.com

Copyright © 2017. Vantec Thermal Technologies. All Rights Reserved.

Package Contents:

1. SATA/IDE to USB 2.0 Adapter
2. Power Adapter With On/Off Switch
3. Power Cable with SATA power connector
4. Power Cable with Molex power connector
5. Power Converter
6. SATA Data Cable
7. User Manual



TRADEMARKS

Apple and Mac are trademarks of Apple Computer. Microsoft, Windows XP/Vista/7/8.1/10 are trademarks of Microsoft Corporation.

*All other third-party brands and names are the property of their respective owners.

Table of Contents:

1. Introduction.....	4
2. Specifications/Features.....	4
3. System Requirements.....	4
4. Driver Installation.....	4
5. Installing Adapter to 3.5"/5.25"(PATA) IDE Drive.....	5
6. Installing Adapter to 2.5"/3.5"/5.25" SATA Drive.....	7
7. Installing Adapter to 2.5" (PATA) IDE Drive.....	9
8. Disconnecting the SATA/IDE-USB Adapter.....	11
9. Detecting the Drive or Creating a New Partition.....	12
10. Troubleshooting/FAQ.....	14
11. Warranty.....	15
12. Contact.....	15

1. Introduction

The SATA/IDE to USB 2.0 Adapter gives you the flexibility of connecting almost any drive to a computer via USB. It can be a 2.5", 3.5", 5.25", hard drives, SSDs, Optical drives and more. Connecting your device has never any easier. The adapter also supports hot-swap via USB function allowing you to connect and disconnect your device without the need of restarting your computer. An external power adapter is included which will allow you to power your drives giving you the ability to quickly add or swap devices. The SATA/IDE to USB 2.0 Adapter is ideal tool for anyone needing to access a storage device on the fly.

2. Specifications/Features

Specifications:

- Model: CB-ISATAU2
- Interface: USB 2.0
- Supported Devices: SSDs, Hard Drives, Optical Drives
- Drive Size: 2.5", 3.5", 5.25" IDE or SATA I/II/III
- Power Supply: AC Adapter
- Dimensions: 70 x 43 x 10 mm

Features:

- Compact and Light Design For Easy Storage
- Supports 2.5" & 3.5" SATA or PATA (IDE) Hard Drives/SSDs
- Supports 5.25" Optical CD/DVD/Blu-ray drives
- Hot-Swappable: Plug & Play without Rebooting

3. System Requirements

Microsoft Windows XP/Vista/7/8.1/10 (32/64 Bit)


Mac OS X 10.4+

For USB 2.0 Speeds, the System Must Support USB 2.0 Specifications

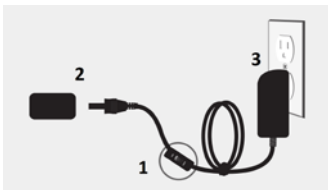
4. Driver Installation

No drivers are needed. The SATA/IDE to USB 2.0 adapter uses standard USB 2.0 drivers already built into the OS.

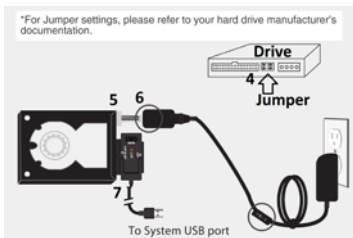
5. Installing the SATA/IDE USB 2.0 Adapter to 3.5"/5.25"(PATA) IDE Drive

-  **WARNING:** Please make sure the power connectors are oriented correctly before connecting. Incorrect connection may cause severe damage to your hard drive and/or electrical shock.

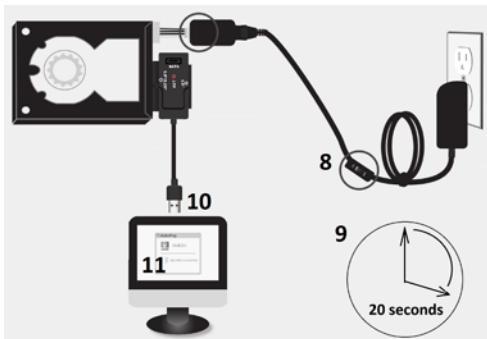
1. Check the Power Adapter switch is in the Off position
2. Connect the power converter to the Power Adapter
3. Connect the Power Adapter to the wall outlet




4. Check and change the jumper setting on your drive to Master Single Drive Mode (the information for changing drive mode is located on the label of your drive)
5. Connect the Power Cable with Molex Power Connector to your drive
6. Connect the end of the Molex cable to the Power converter
7. Connect the SATA/IDE to USB2 Adapter to your drive



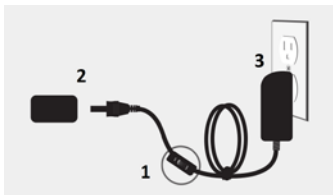
8. Once securely connected, you may TURN ON the Power Adapter switch
9. Wait 20 seconds for the drive to spin up to correct speed (if this is an older drive, wait 30 seconds)
10. Insert the USB connector from SATA/IDE to USB 2.0 Adapter to your system USB 2.0 / 3.0 port
11. When connected properly, the hard drive should be automatically detected showing the device in file explorer.



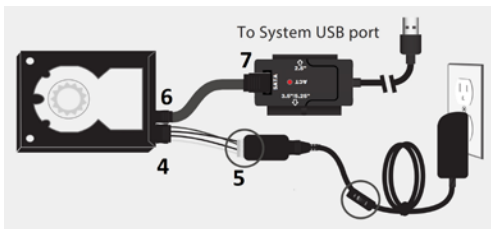
6. Installing the SATA/IDE USB 2.0 Adapter to 2.5"/3.5"/5.25" SATA Drive

 **WARNING:** Please make sure the power connectors are oriented correctly before connecting. Incorrect connection may cause severe damage to your hard drive and/or electrical shock.

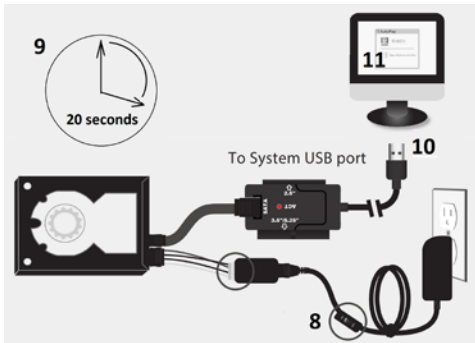
1. Check the Power Adapter switch is in the Off position
2. Connect the power converter to the Power Adapter
3. Connect the Power Adapter to the wall outlet



4. Connect the Power Cable with SATA Power Connector to your drive
5. Connect the end of the SATA Power Cable to the Power converter
6. Connect the Red SATA DATA Cable to the Drive
7. Connect the other end of the Red SATA DATA cable top of the SATA/IDE to USB2 Adapter (marked SATA)

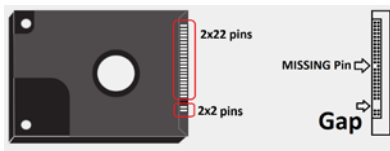


- Once securely connected, you may TURN ON the Power Adapter switch
- Wait 20 seconds for the drive to spin up to correct speed (if this is an older drive, wait 30 seconds)
- Insert the USB connector from SATA/IDE to USB 2.0 Adapter to your system USB 2.0 / 3.0 port
- When connected properly, the hard drive should be automatically detected showing the device in file explorer.

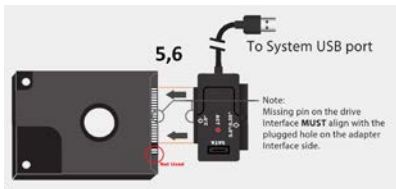


7. Installing the SATA/IDE USB 2.0 Adapter to 2.5" (PATA) IDE Drive

1. Since 2.5" IDE drive when connected to the SATA/IDE USB 2.0 Adapter is drawing power from the USB port, you do not need to use the Power Adapter
2. Please follow instruction carefully. If connected wrongly it may damage your drive and adapter
3. Look carefully at the 2.5" IDE drive. You will notice there are two sets of pins on the drive interface. A set with 44 pins (important - there is a pin missing) and another 4 pins. They are often separated by a gap shown



4. The 4 pins are not used
5. Align carefully the 44 pins (note: one hole on the adapter side interface is plug up) on the adapter with the drive's 44 pins. The missing pin **MUST** align up with the plug up hole.
6. Connect and make sure the interface is securely connected between the drive and the Adapter.



7. Insert the USB connector from SATA/IDE to USB 2.0 Adapter to your system USB 2.0 / 3.0 port
8. When connected properly, the hard drive will spin up. Once it is spin up to speed it should automatically detected showing the device in file explorer.



8. Disconnecting the SATA/IDE-USB Adapter

Warning: NEVER remove the SATA/IDE-USB while the hard drive is in use. Doing so may cause data corruption or damage the hard drive, SATA/IDE-USB adapter, or computer.

Windows XP/Vista/7/8.1/10:

1. Make sure all operations using the hard drive connected to the SATA/IDE-USB Adapter have ceased.
2. Close any windows and programs pertaining to the SATA/IDE-USB Adapter.
3. Double click the green “Unplug or Eject Hardware” icon in the system tray and select [Safely Remove Hardware]. Select the device you wish to remove and click on [Stop]. The system should prompt, “It is now safe to remove the USB device.” If not, wait for any programs still using the device to finish and try again.
4. Unplug the USB cable from the system.
5. Disconnect power from the drive if desired.

Mac OS:

1. Make sure all operations using the hard drive connected to the SATA/IDE-USB Adapter have ceased.
2. Close any windows and programs pertaining to the SATA/IDE-USB Adapter.
3. From the Desktop, drag the SATA/IDE-USB Adapter hard drive to the trash.
4. Unplug the USB cable from the system.
5. Disconnect power from the drive if desired.

9. Detecting the Drive or Creating a New Partition:

Note: If it does not automatically detect AND this is a new drive, you may need to initialize or format the hard drive. This can be done through 'Disk Management' or 'Disk Utility.' Please refer to your hard drive manual form further instructions on how to initialize or format a hard drive.

Windows:

1. Right click on "My Computer" and choose Manage.
2. Under "Storage" on the LEFT pane, select Disk Management
3. Windows should now give you the option to initialize the disk. Continue through the wizard leaving the values at their defaults. If the wizard does not appear, locate the new drive in the lower right pane, right click on the new disk (where it reads "Disk #") and choose Initialize. (This step will only be required if a red error symbol is displayed.)
4. Locate your hard drive in the bottom right pane. Right click on the area with a status bar (to the right of the "Disk #" area) and choose New Partition.
5. Follow the directions of the wizard. The recommended partition type is "primary" and the recommended file system is "NTFS." If you are using drive greater than 2TB, initialize it in GPT mode for Windows Vista/7/8.1/10.
6. Once complete, you should now be able to see the drive in Windows Explorer.

Mac OS X 10.x.x:

Initializing a Hard Drive:

1. Open Disk Utility (under Applications\Utilities)
2. Select the attached drive in the list to the left. Click it and then click the partition tab to the right.
3. Select the desired partitioning scheme.
4. Open the Type pop-up menu in the Volume Info area and choose
5. Mac OS Extended Format.
6. Resize the volumes if desired.
7. When ready, click OK.
8. Click Initialize.

Notes:

If initialization fails, do the following:

1. Choose Initialization Options from the Functions menu.
2. Click the checkbox next to "Low level format", and then click OK. Choosing this option adds significant time to the initialization process.

Formatting a Hard Drive:

1. Start the Disk Utility tool (under Applications\Utilities)
2. Select the new hard drive you are trying to install
3. Click on the "Erase" tab
4. Choose a volume format and assign a name to the new drive.
5. Click on Erase.
6. Once complete, your new hard drive should be mounted on your desktop.

If the hard drive will not mount on your system:

Format the drive with a FAT32 or NTFS partition first through a PC system. Once formatted, connect the SATA/IDE-USB adapter to your Mac and run the Disk Utility tool again. You should now be able to format the drive into a Mac partition and mount the drive.

10. Troubleshooting/FAQ:

Q. What should the jumper settings on my hard drive be set to?

A. We recommend the hard drive be set to MASTER or SINGLE. Not Cable Select (CS) or Slave.

Q. Can I connect the SATA/IDE USB 2.0 Adapter to more than one drive at the same time?

A. No. The SATA/IDE-USB cannot handle multiple drives at once.

Q. My computer recognizes the SATA/IDE USB 2.0 Adapter, but it does not assign a drive letter to it.

A. You are probably using a brand new hard drive. If not, then your computer may not be able to recognize the partition on the hard drive because it is damaged or not a valid format. Please refer to the section "Creating a New Partition" for information on how to create a useable partition on your drive.

Q. My computer sometimes recognizes the SATA/IDE USB 2.0 Adapter, but sometimes gives me errors.

A. If your computer is giving you problems with the SATA/IDE USB 2.0 Adapter; make sure to connect the USB cable to a rear port, directly off the motherboard or USB PCI card. The USB ports on the front of the system may not provide the maximum power to the adapter plus drive.

Q. Why can't I copy files larger than 4GB onto my SATA/IDE USB 2.0 Adapter?

A. You have probably formatted the hard drive in the FAT32 file system. FAT32 limits the file sizes to 4GB maximum. The NTFS file system does not have this limitation.

Q. Why is the data on my hard drive corrupted?

A. Connecting your hard drive to the SATA/IDE USB 2.0 Adapter is just like connecting a hard drive to the inside of your computer. The SATA/IDE USB 2.0 Adapter itself will not corrupt your data. If your data has become corrupt, it is likely caused by the removal of the SATA/IDE USB 2.0 Adapter while data was still being written to the hard drive. CAUTION: Never remove the SATA/IDE-USB Adapter while data is being written to the hard drive! Doing so may cause the hard drive to become corrupt. Make sure all applications being run off the disk and all files in use are no longer in use before removing the unit.

11. Warranty:

The SATA/IDE to USB 2.0 Adapter comes with a 1 year limited warranty (90 day parts). If your unit should become defective within that time frame, please go to <https://www.vantecusa.com> for information on how to receive warranty exchange or repair. Cosmetic defects and missing parts are not covered under this warranty. Please check the contents of the unit to make sure you received all parts. Also, check for any cosmetic flaws. If any parts are missing or if there are cosmetic defects, please contact the retailer from which you purchased the unit immediately and ask for a replacement.

12. Contact:

Vantec Thermal Technology

www.vantecusa.com